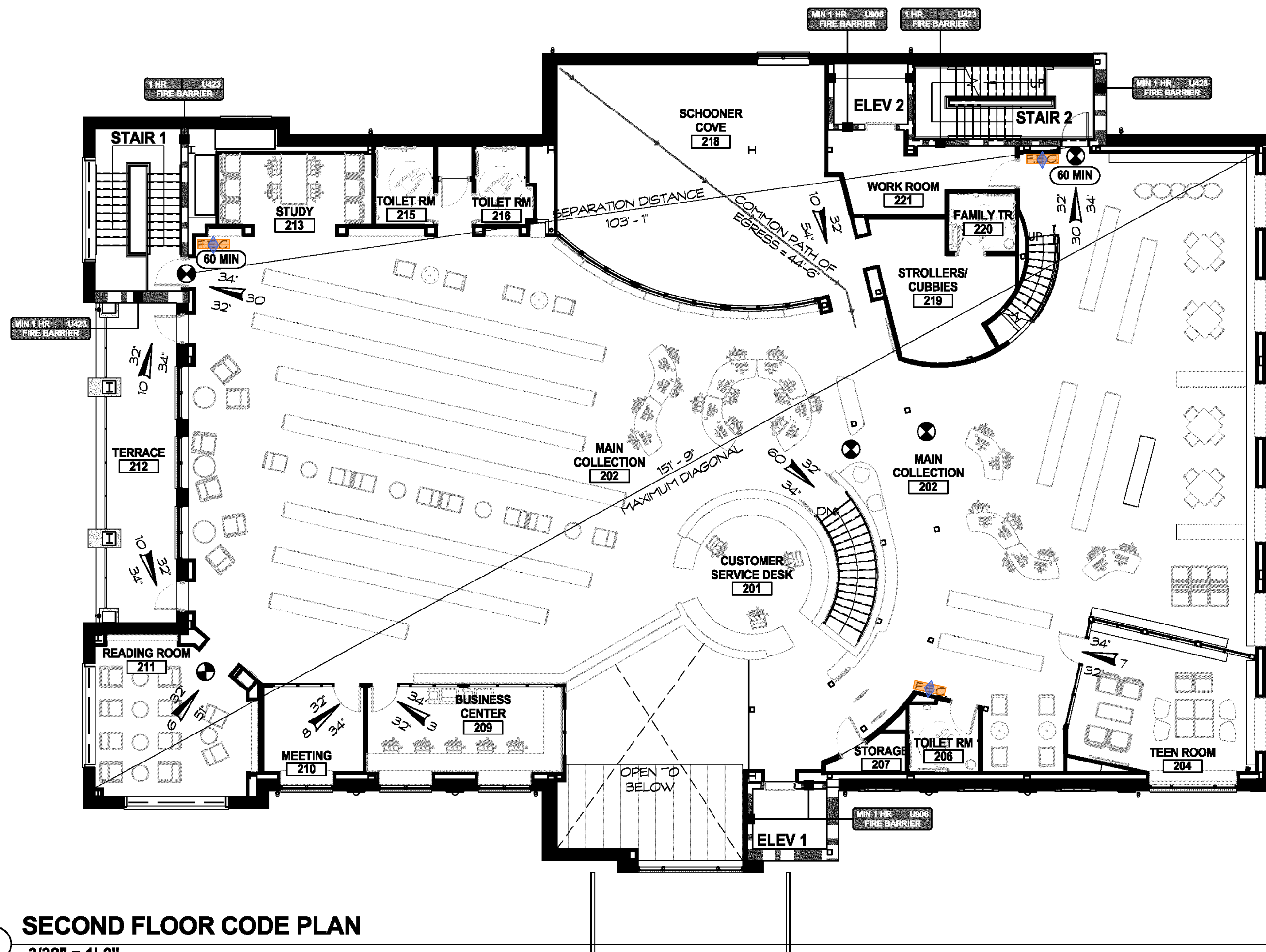


3 MEZZANINE CODE PLAN
3/32" = 1'-0"

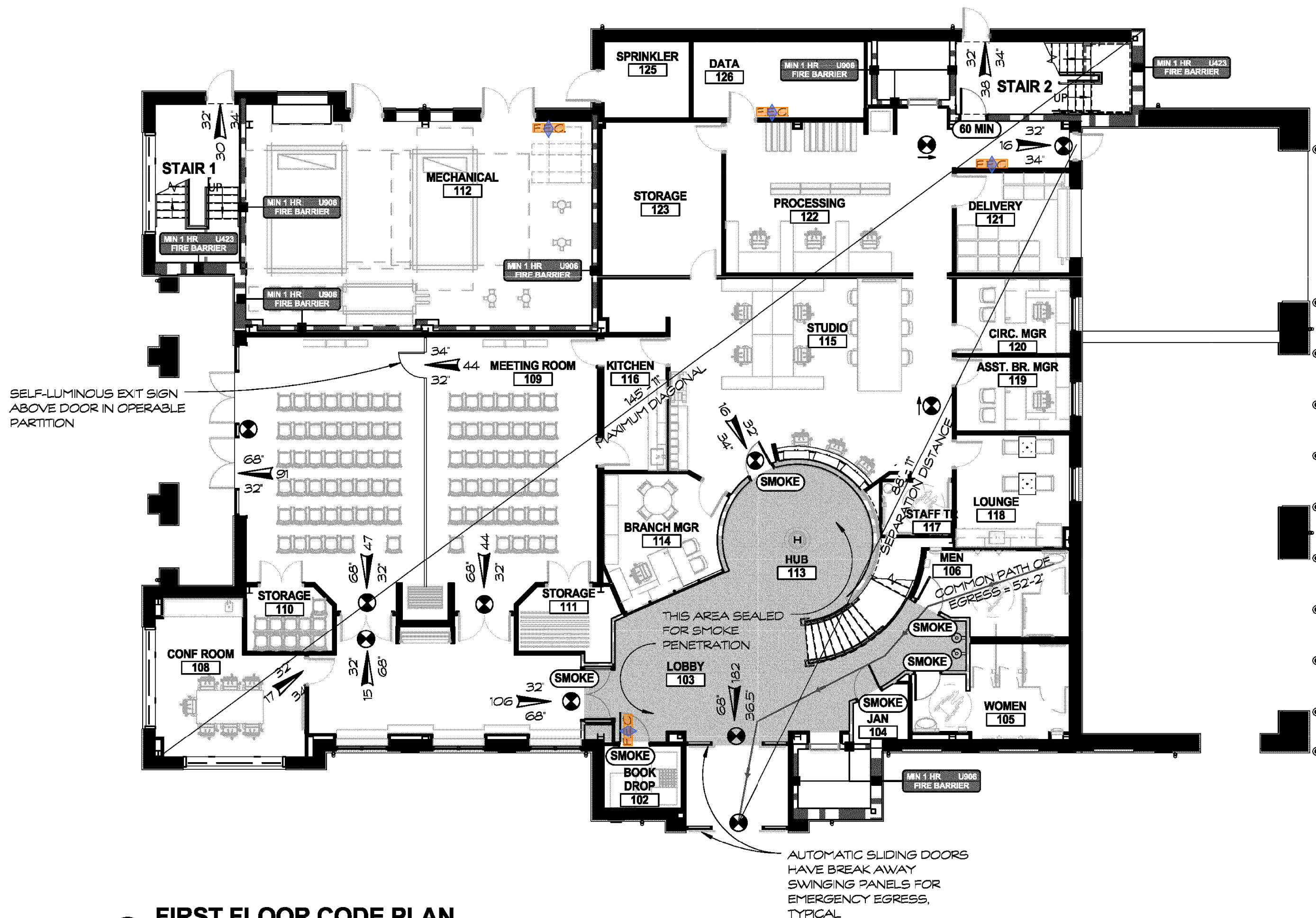


2 SECOND FLOOR CODE PLAN
3/32" = 1'-0"

- 78 - Fire Extinguisher Cabinet - 9 EA
- 79 - Fire Extinguisher - 9 EA

CODE PLAN LEGEND	
ROOM NAME USE CLASSIFICATION AREA # OCCUPANTS	ROOM INFORMATION TAG
32' @ 2' A B	A = OCCUPANTS B = ACTUAL EGRESS WIDTH C = REQUIRED EGRESS WIDTH
ILLUMINATED 'EXIT' SIGN	
ILLUMINATED 'EXIT' SIGN W/ DIRECTION INDICATOR	
EMERGENCY LIGHTING	
1 HR. ILLUMINATED SMOKE PARTITION	RATED WALL TAG
FE O	RECESSED FIRE EXTINGUISHER & CABINET
	SMOKE PARTITION
	1/2 HOUR RATED
	1 HOUR RATED
	2 HOUR RATED
	3 HOUR RATED

LEGEND - CODE PLAN LEGEND
NOT TO SCALE



1 FIRST FLOOR CODE PLAN
3/32" = 1'-0"

CONSULTANT:

SEAL:

I HEREBY CERTIFY THAT THESE DOCUMENTS WERE PREPARED OR APPROVED BY ME, AND THAT I AM A DULY LICENSED PROFESSIONAL ARCHITECT UNDER THE LAWS OF THE STATE OF MARYLAND. LICENSE NUMBER: #15505 EXPIRATION DATE: 8-18-2014

MANNS WOODWARD STUDIOS
ARCHITECTURE | INTERIORS | MASTER PLANNING

WWW.MWSARCH.COM
(P) 410-344-1460
(F) 443-403-2460

10839-D PHILADELPHIA RD
WHITE MARSH, MD 21162

CODE PLAN & ANALYSIS

HARFORD COUNTY PUBLIC LIBRARY
HAYRE DE GRACE LIBRARY

120 NORTH UNION AVENUE
HAYRE DE GRACE, MD 21078

NO.	DESCRIPTION	DATE

PROJECT NUMBER:
13-026

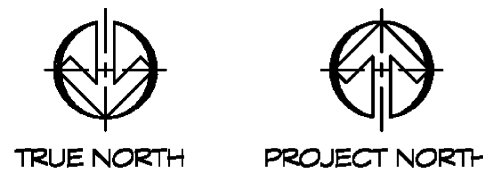
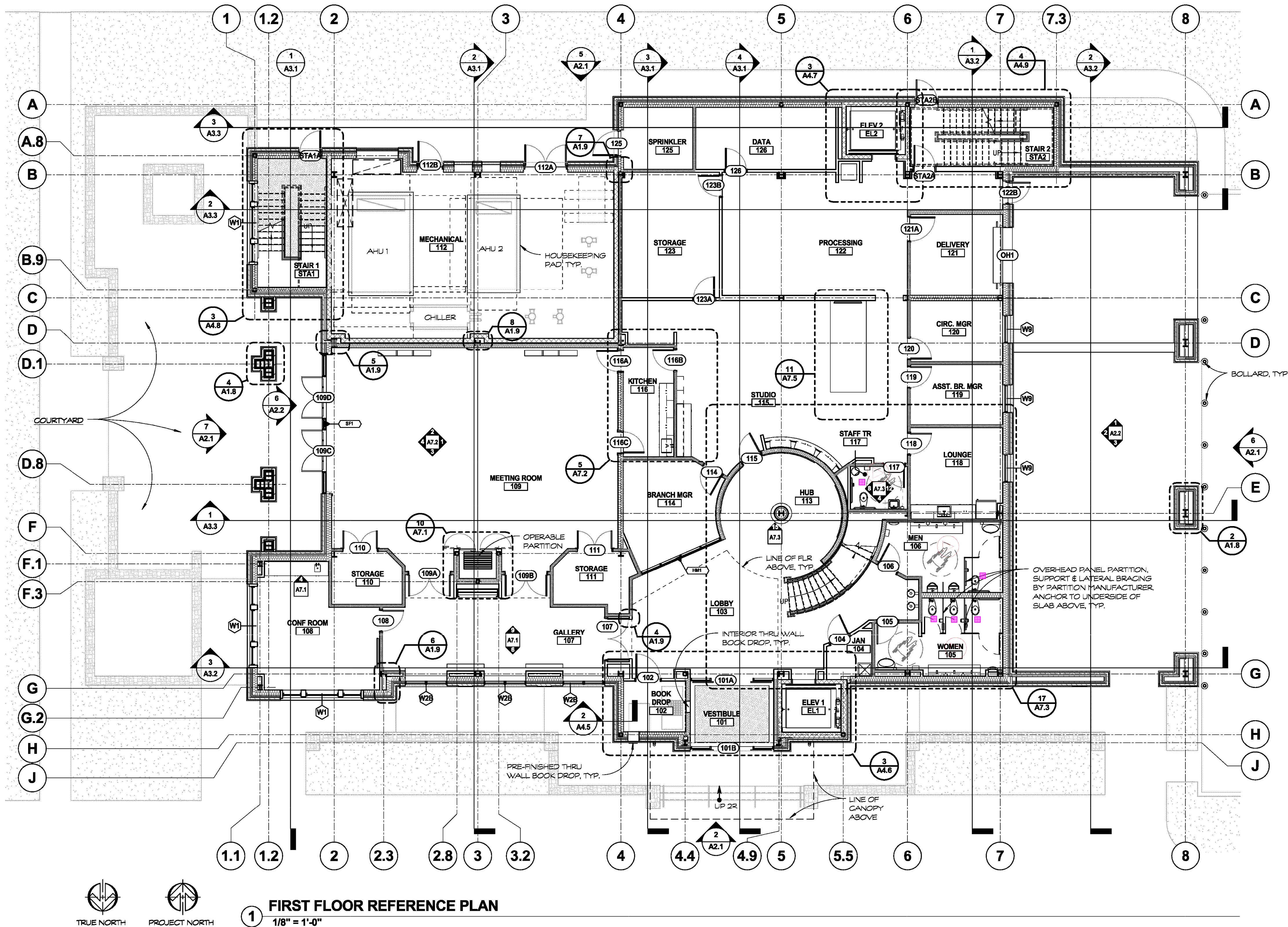
PROJECT SET:
BID DOCUMENTS

DATE ISSUED:
7.23.14

DRAWING TITLE:
CODE PLAN & ANALYSIS

SHEET NUMBER:
G2.2

Takeoff By: Anuj
Checked By: Naresh
Date: 1st June, 2016



1 FIRST FLOOR REFERENCE PLAN
1/8" = 1'-0"

- REFERENCE NOTES:
1. SEE A1.4 THROUGH A1.9 FOR DIMENSION PLANS & PARTITION INFORMATION.
 2. SEE A5 SERIES FOR ROOF PLAN & DETAILS.
 3. SEE A6 SERIES FOR OPENING SCHEDULE, DETAILS & ELEVATIONS.
 4. SEE A6 SERIES FOR FINISH PLANS, SCHEDULES & DETAILS.
 5. SEE A8 SERIES FOR REFLECTED CEILING PLANS & DETAILS.
 6. SEE A9 SERIES FOR MISCELLANEOUS DETAILS.
 7. SEE A1.10 FOR COURTYARD/SITE LAYOUT & DETAILS.

- GENERAL NOTES:
1. G.C. SHALL COORDINATE LOCATION, PLAN DIMENSIONS, DEPTHS/HEIGHTS & REINFORCING FOR ALL REQUIRED SLAB DEPRESSIONS & HOUSE KEEPING PADS WITH PRODUCT/EQUIPMENT SUPPLIERS & THESE DRAWINGS.
 2. INSTALL 24" LONG #4 DOVELS @ 12" O.C. BETWEEN INTERIOR CONCRETE SLAB ON - GRADE & EXTERIOR CONCRETE SLAB ON GRADE @ EACH EXTERIOR DOOR.
 3. G.C. SHALL INSTALL MIN. 3/4" THICK PLYWOOD BLOCKING FOR ALL WALL HUNG ITEMS SHOWN IN DRAWINGS, INCLUDING BUT NOT LIMITED TO ITEMS N.I.C. OR PROVIDED BY OWNER.
 4. ALL SEMI-CONCEALED AND SEMI-EXPOSED SPACES BEHIND GRILLES, GRATES, CANVAS, & MILLWORK TO BE PAINTED FLAT BLACK.
 5. ALL EXPOSED WOOD TO BE FINISH GRADE, SANDED SMOOTH AND STAINED. ALL FINISH LUMBER SHALL BE FREE OF VISUAL BOWS, CHECKS, CROOKS, CUPS, SHAKES, SPLITS, TWISTS, WYNNES, AND MACHINE BOWS.

64 - Toilet Compartments - 5 EA

MANN'S WOODWARD STUDIOS
ARCHITECTURE | INTERIORS | MASTER PLANNING
WWW.MWSARCH.COM
10839-D PHILADELPHIA RD
WHITE MARSH, MD 21162
(P) 410-344-1460
(F) 443-403-2460

FIRST FLOOR REFERENCE PLAN
HARFORD COUNTY PUBLIC LIBRARY
HAYRE DE GRACE LIBRARY
120 NORTH UNION AVENUE
HAYRE DE GRACE, MD 21078

NO.	DESCRIPTION	DATE

PROJECT NUMBER:
13-026
PROJECT SET:
BID DOCUMENTS
DATE ISSUED:
7.23.14

DRAWING TITLE:
FIRST FLOOR REFERENCE
PLAN

SHEET NUMBER:
A1.1

Takeoff By: Anuj
Checked By: Naresh
Date: 1st June, 2016

64 - Toilet Compartments - 4 EA

REFERENCE NOTES:
1. SEE A1.4 THROUGH A1.9 FOR DIMENSION PLANS & PARTITION INFORMATION.
2. SEE A5 SERIES FOR ROOF PLAN & DETAILS.
3. SEE A6 SERIES FOR OPENING SCHEDULE, DETAILS & ELEVATIONS.
4. SEE A6 SERIES FOR FINISH PLANS, SCHEDULES & DETAILS.
5. SEE A8 SERIES FOR REFLECTED CEILING PLANS & DETAILS.
6. SEE A9 SERIES FOR MISCELLANEOUS DETAILS.
7. SEE A1.10 FOR COURTYARD/SITE LAYOUT & DETAILS.

GENERAL NOTES:
1. G.C. SHALL COORDINATE LOCATION, PLAN DIMENSIONS, DEPTHS/HEIGHTS & REINFORCING FOR ALL REQUIRED SLAB DEPRESSION & HOUSE KEEPING PADS WITH PRODUCT/EQUIPMENT SUPPLIERS & THESE DRAWINGS.
2. INSTALL 24" LONG #4 DOWELS @ 12" O.C. BETWEEN INTERIOR CONCRETE SLAB ON - GRADE & EXTERIOR CONCRETE SLAB ON GRADE @ EACH EXTERIOR DOOR.
3. G.C. SHALL INSTALL MIN. 3/4" THICK PLYWOOD BLOCKING FOR ALL WALL HUNG ITEMS SHOWN IN DRAWINGS, INCLUDING BUT NOT LIMITED TO ITEMS N.I.C. OR PROVIDED BY OWNER.
4. ALL SEMI-CONCEALED AND SEMI-EXPOSED SPACES BEHIND GRILLES, GRATES, CANVAS, & MILLWORK TO BE PAINTED FLAT BLACK.
5. ALL EXPOSED WOOD TO BE FINISH GRADE, SANDED SMOOTH AND STAINED. ALL FINISH LUMBER SHALL BE FREE OF VISUAL BOWS, CHECKS, CROOKS, CUPS, SHAKES, SPLITS, TWISTS, WAYNES, AND MACHINE BOWS.

CONSULTANT:

SEAL:

I HEREBY CERTIFY THAT THESE DOCUMENTS WERE PREPARED OR APPROVED BY ME, AND THAT I AM A DULY LICENSED PROFESSIONAL ARCHITECT UNDER THE LAWS OF THE STATE OF MARYLAND.
LICENSE NUMBER: #15505
EXPIRATION DATE: 8-18-2014

MANN'S WOODWARD STUDIOS
ARCHITECTURE | INTERIORS | MASTER PLANNING
WWW.MWSARCH.COM
10839-D PHILADELPHIA RD
WHITE MARSH, MD 21162
(P) 410-344-1460
(F) 443-403-2460

SECOND FLOOR REFERENCE PLAN
HARFORD COUNTY PUBLIC LIBRARY
HAYRE DE GRACE LIBRARY
120 NORTH UNION AVENUE
HAYRE DE GRACE, MD 21078

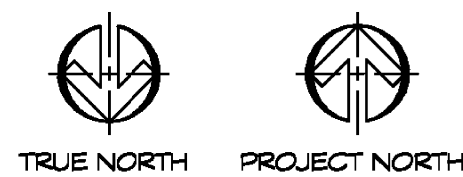
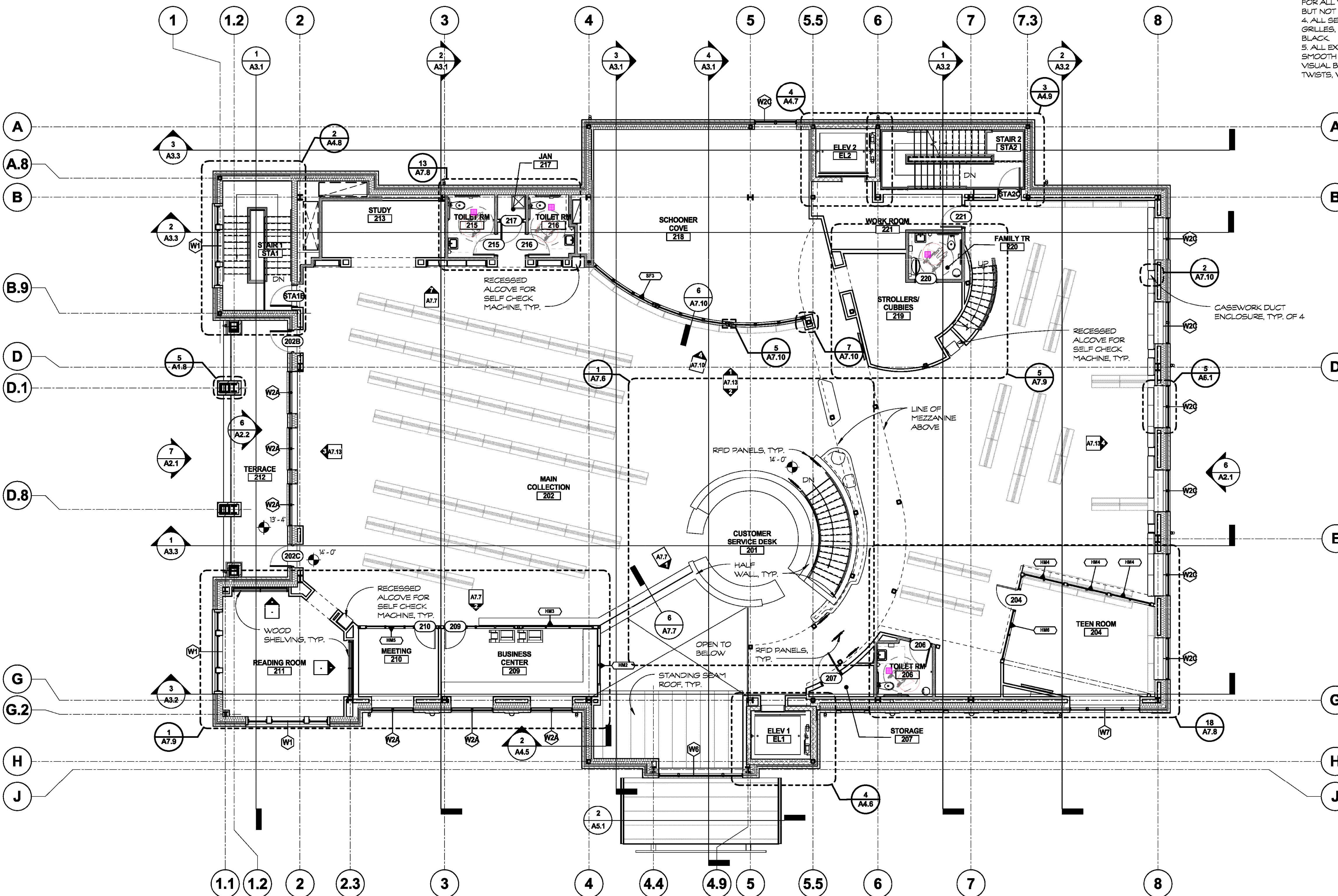
NO.	DESCRIPTION	DATE

PROJECT NUMBER:
13-026
PROJECT SET:
BID DOCUMENTS
DATE ISSUED:
7.23.14

DRAWING TITLE:
SECOND FLOOR
REFERENCE PLAN

SHEET NUMBER:
A1.2

Takeoff By: Anuj
Checked By: Naresh
Date: 1st June, 2016

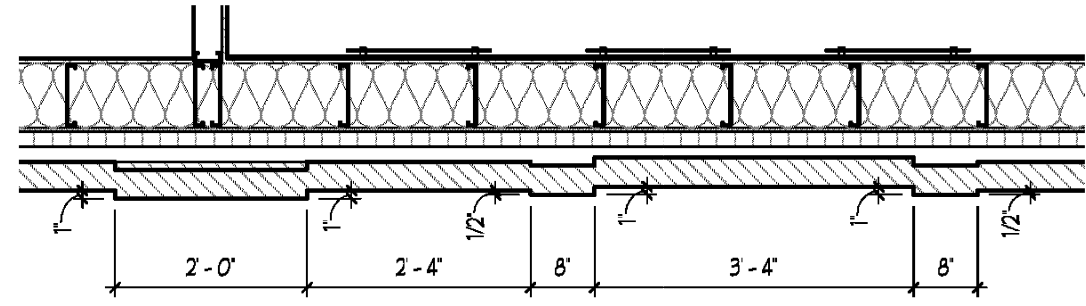


1 SECOND FLOOR REFERENCE PLAN
1/8" = 1'-0"

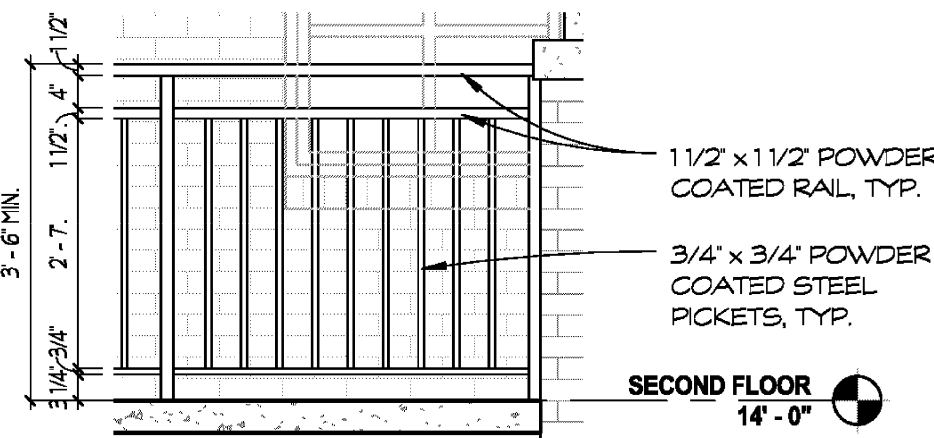
52 - Cantilevered Steel Framed Canopy - 1 EA

63 - 10" Pre- Finished Aluminum - 26 EA

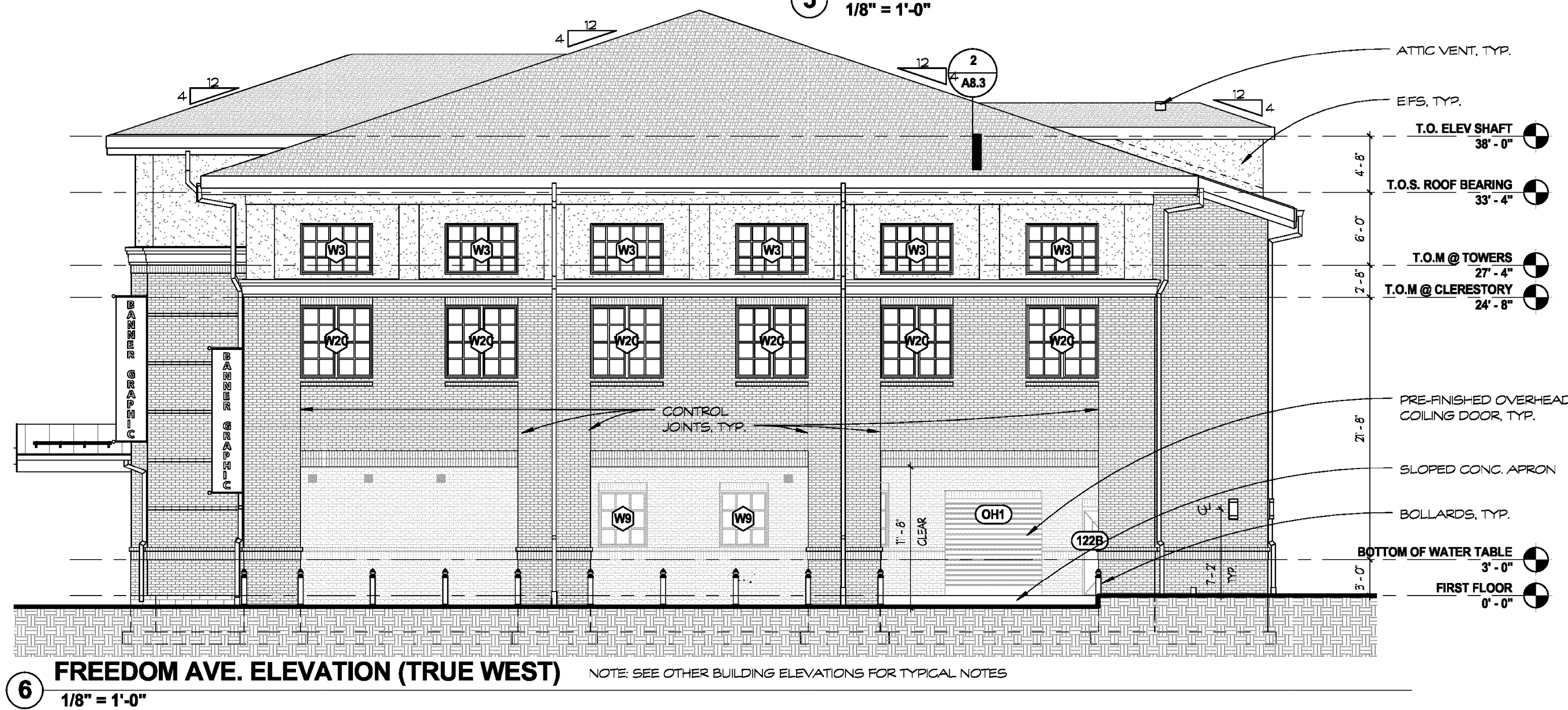
1 ENLARGED PARTIAL ELEVATION - BRICK PANEL
1/4" = 1'-0"



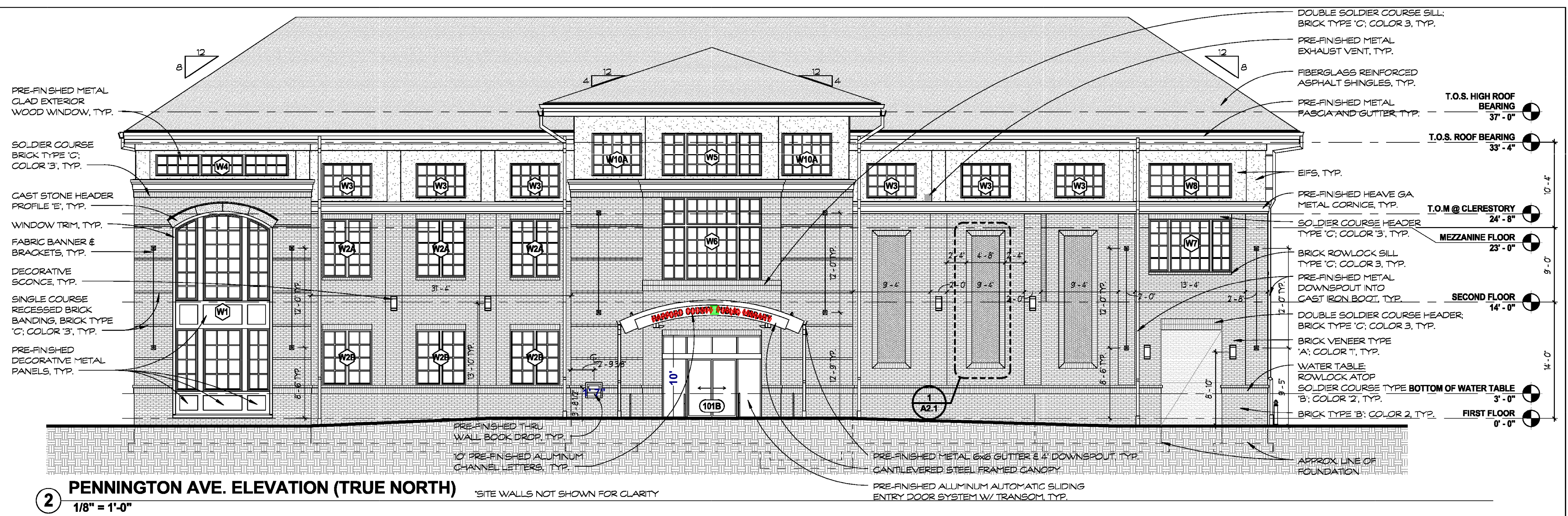
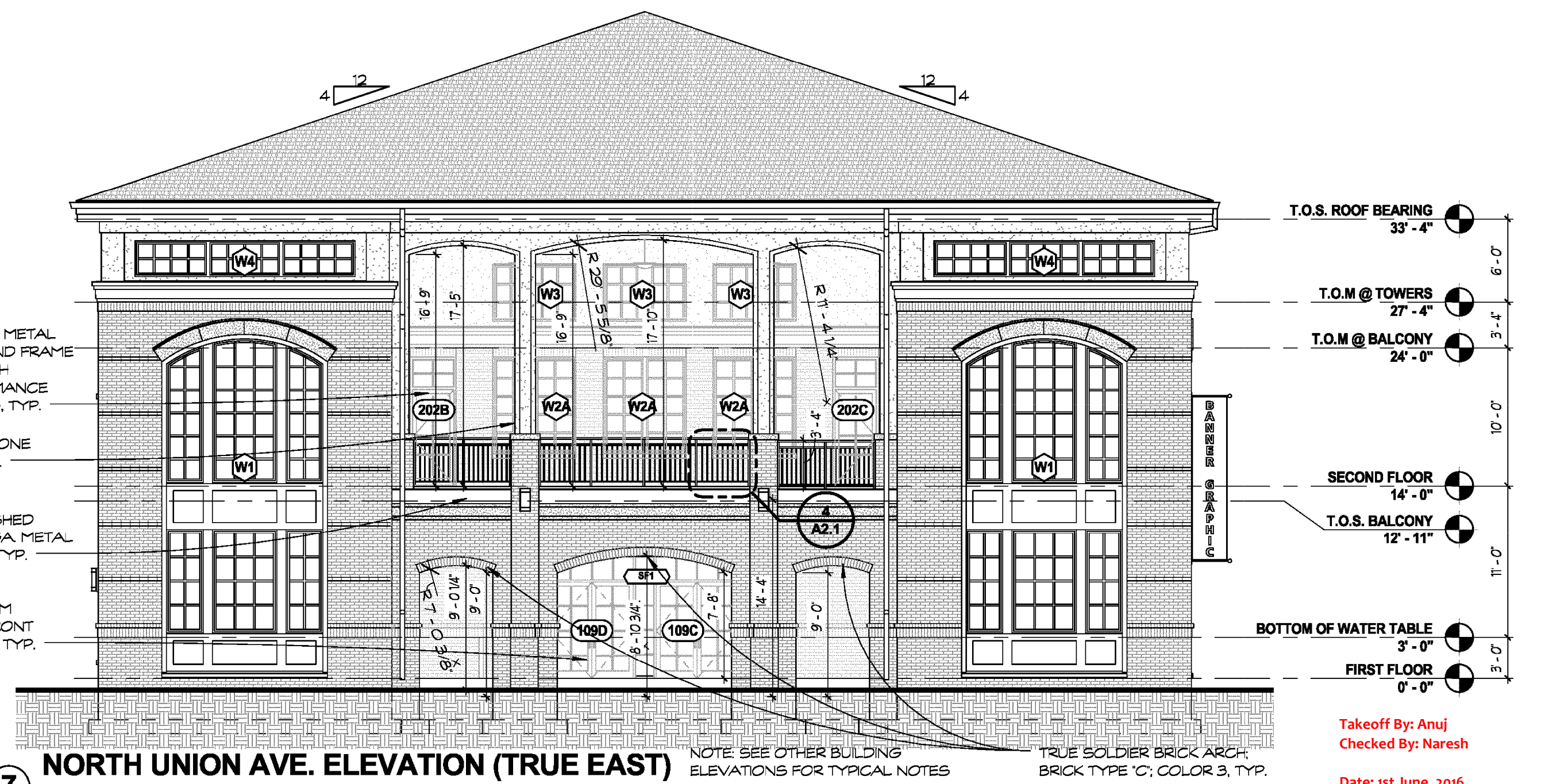
3 PLAN DETAIL - RECESSED BRICK PANEL
1/2" = 1'-0"



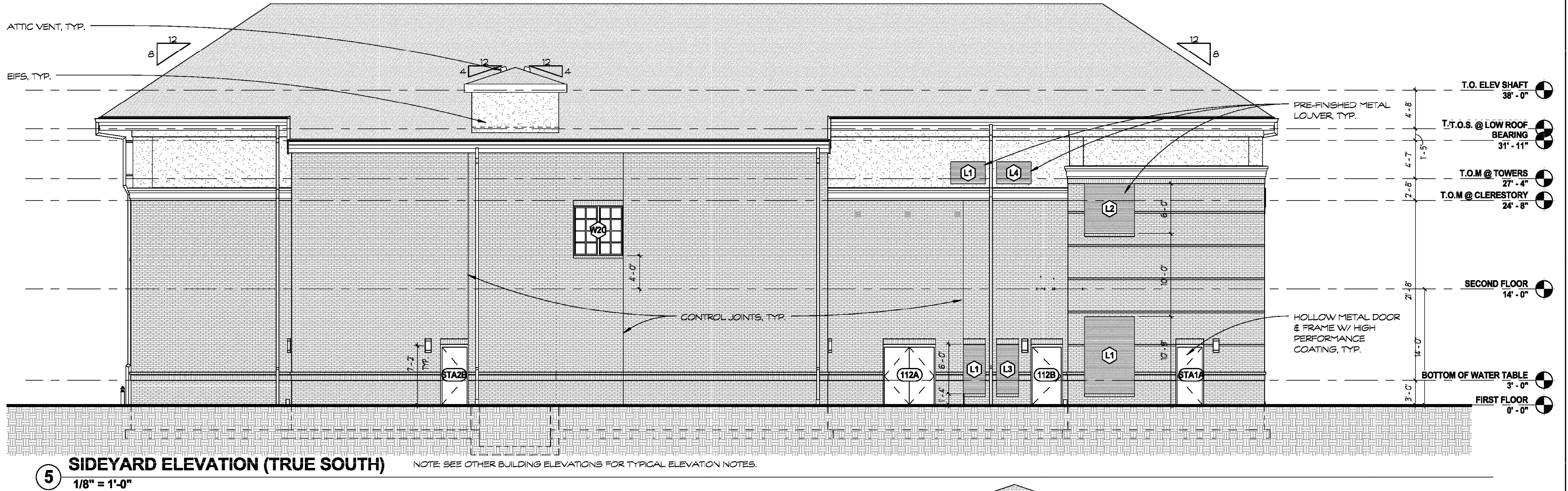
4 TYPICAL RAILING @ TERRACE
1/2" = 1'-0"



7 NORTH UNION AVE. ELEVATION (TRUE EAST)
1/8" = 1'-0"



2 PENNINGTON AVE. ELEVATION (TRUE NORTH)
1/8" = 1'-0"



5 SIDEYARD ELEVATION (TRUE SOUTH)
1/8" = 1'-0"

CONSULTANT:

SEAL:

I HEREBY CERTIFY THAT THESE DOCUMENTS
WERE PREPARED OR APPROVED BY ME,
AND THAT I AM A DULY LICENSED
PROFESSIONAL ARCHITECT UNDER THE
LAWS OF THE STATE OF MARYLAND.
LICENSE NUMBER: #15505
EXPIRATION DATE: 8-18-2014

MANN'S WOODWARD STUDIOS
ARCHITECTURE | INTERIORS | MASTER PLANNING

WWW.MWSARCH.COM
(P) 410-344-1460
(F) 443-403-2460

BUILDING ELEVATIONS
HARFORD COUNTY PUBLIC LIBRARY
HAYRE DE GRACE LIBRARY

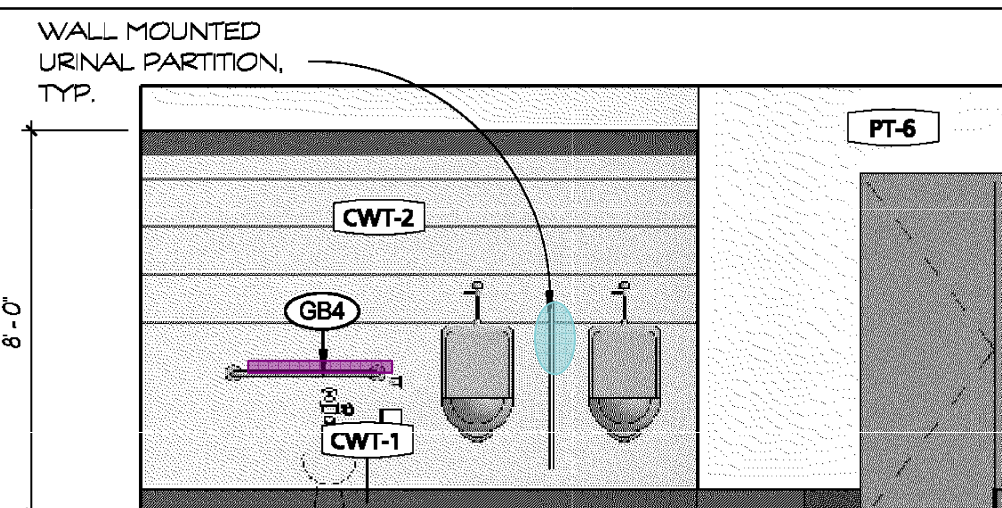
120 NORTH UNION AVENUE
HAYRE DE GRACE, MD 21078

NO.	DESCRIPTION	DATE

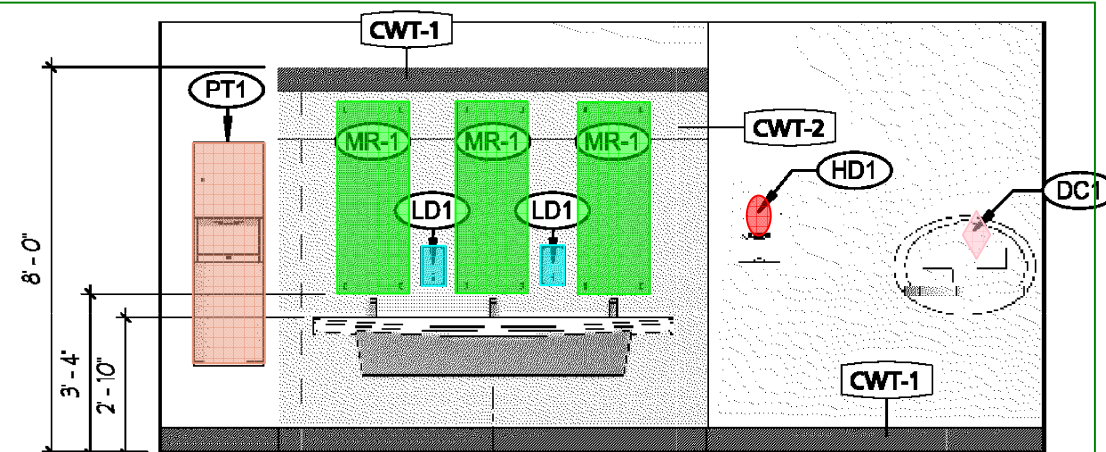
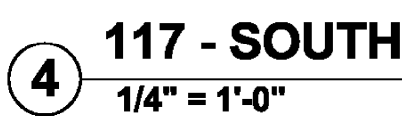
PROJECT NUMBER:
13-026
PROJECT SET:
BID DOCUMENTS
DATE ISSUED:
7.23.14

DRAWING TITLE:
BUILDING ELEVATIONS

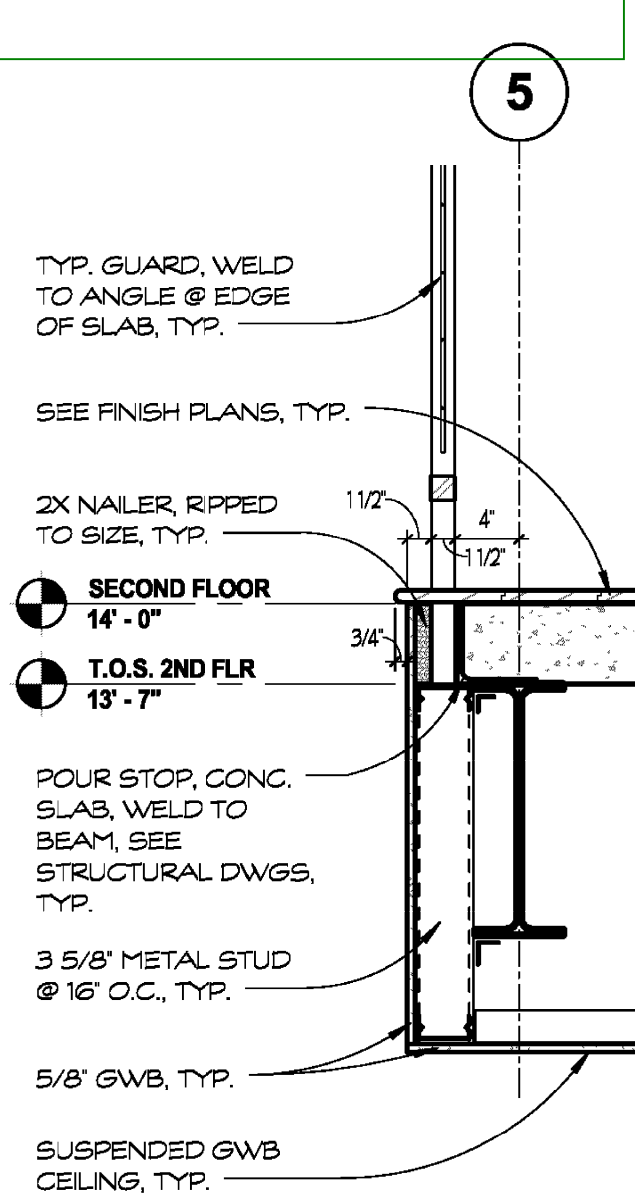
SHEET NUMBER:
A2.1



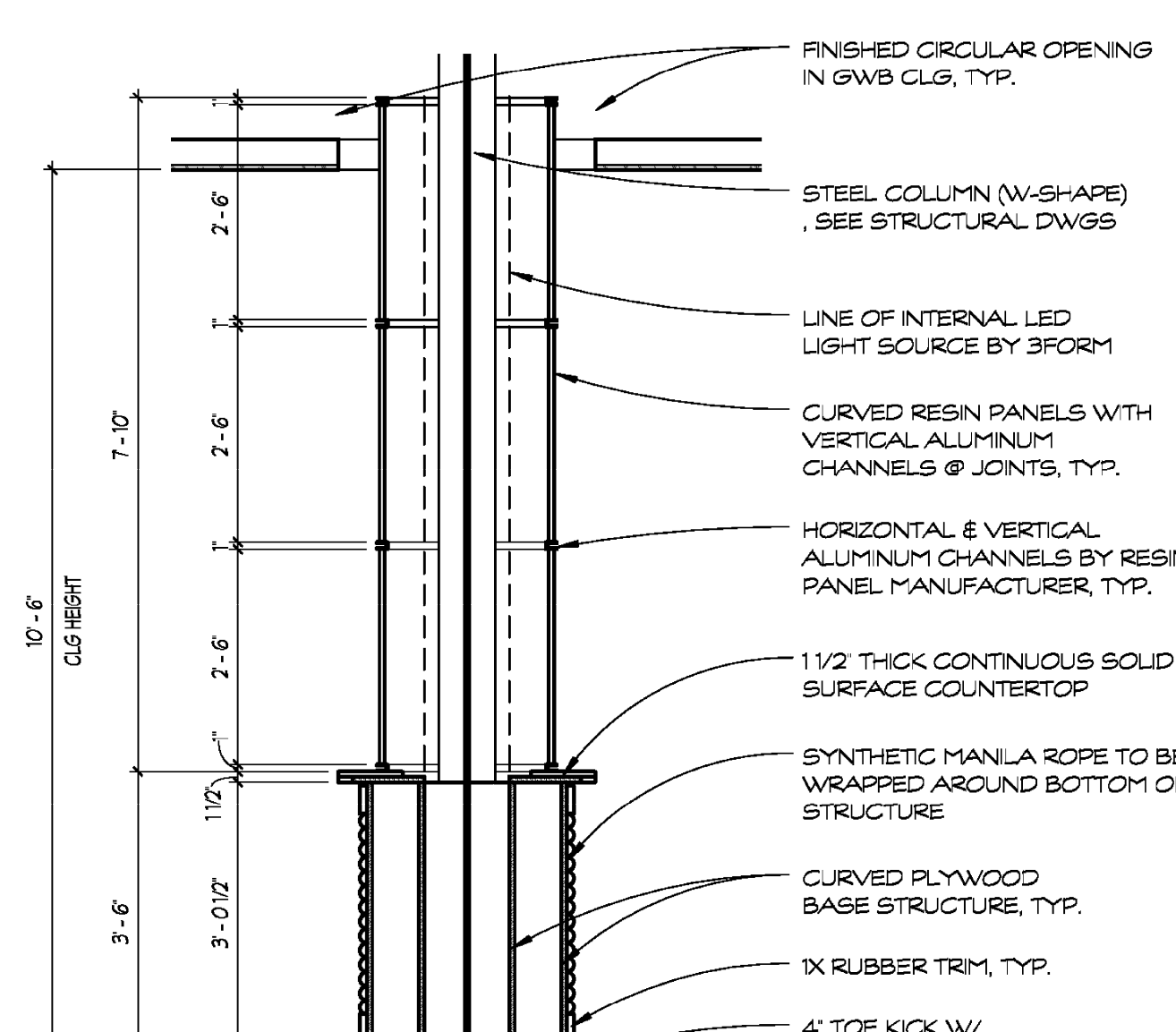
3 MENS RESTROOM - SOUTH
1/4" = 1'-0"



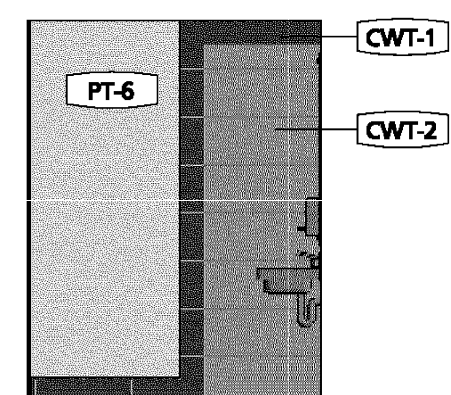
7 WOMENS RESTROOM - SOUTH
1/4" = 1'-0"



11 SLAB EDGE DTL @ ELEV 1
1" = 1'-0"



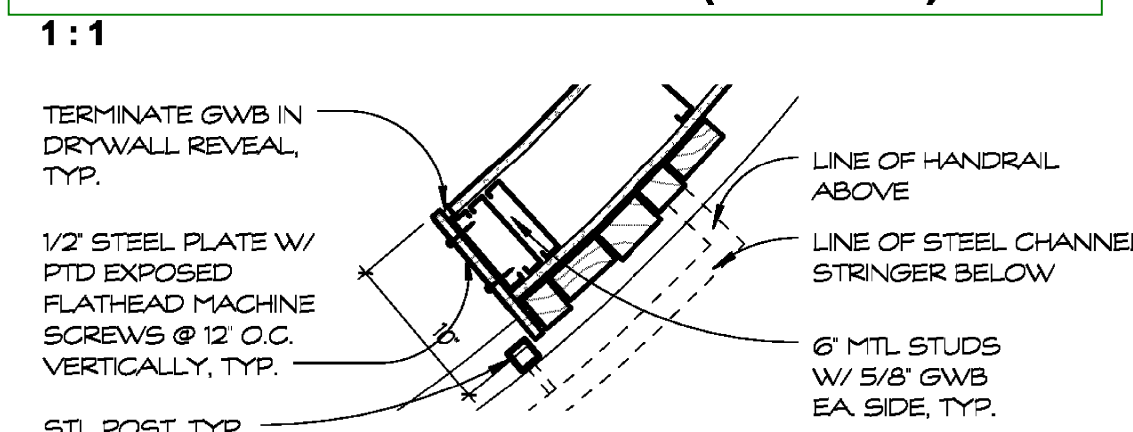
16 SECTION DETAIL - COL. SURROUND
1/2" = 1'-0"



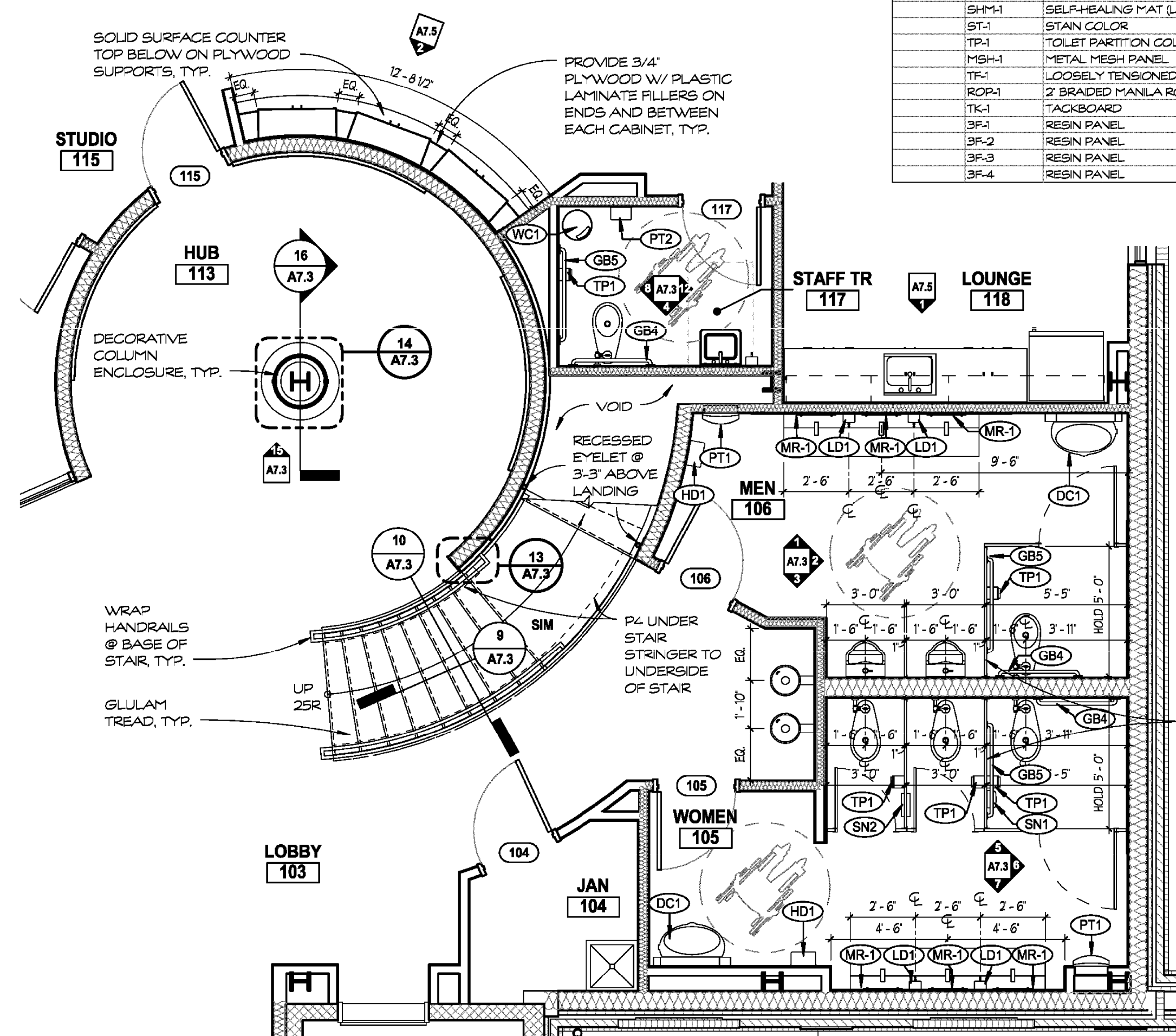
12 117 - EAST
1/4" = 1'-0"

NOTE: MOUNT ALL FIXTURES IN ACCORDANCE WITH ADA REQUIREMENTS

TOILET ROOM EQUIPMENT (TYPICAL)






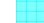

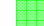




13 WOOD MOSAIC DETAIL
1" = 1'-0"



17 ENLARGED PLAN - HUB
1/4" = 1'-0"

[illegible]

-  66 - TP-1 _Toilet Paper Dispenser - Over Under - 1 EA
-  67 - PT-1 _Paper Towel Dispenser/Disposal - 2 EA
-  68 - PT-2 _Paper Towel Dispenser - 1 EA
-  69 - LD-1 _Liquid Soap Dispenser - 6 EA
-  70 - MR-1 _Wall Mounted Mirror 18" X 48" - 7 EA
-  71 - HD-1 _Hand Dryer - 2 EA
-  72 - DC-1 _Wall Mounted Diaper Changing Station - 2 EA
-  73 - GB-4 _Grab Bar - 36" - 3 EA
-  74 - GB-5 _Grab Bar - 42" - 1 EA
-  80 - Urinal Partition - 1 EA

I HEREBY CERTIFY THAT THESE DOCUMENTS
WERE PREPARED OR APPROVED BY ME,
AND THAT I AM A DULY LICENSED
PROFESSIONAL ARCHITECT UNDER THE
LAWS OF THE STATE OF MARYLAND.
LICENSE NUMBER: #15505
EXPIRATION DATE: 8-18-2014

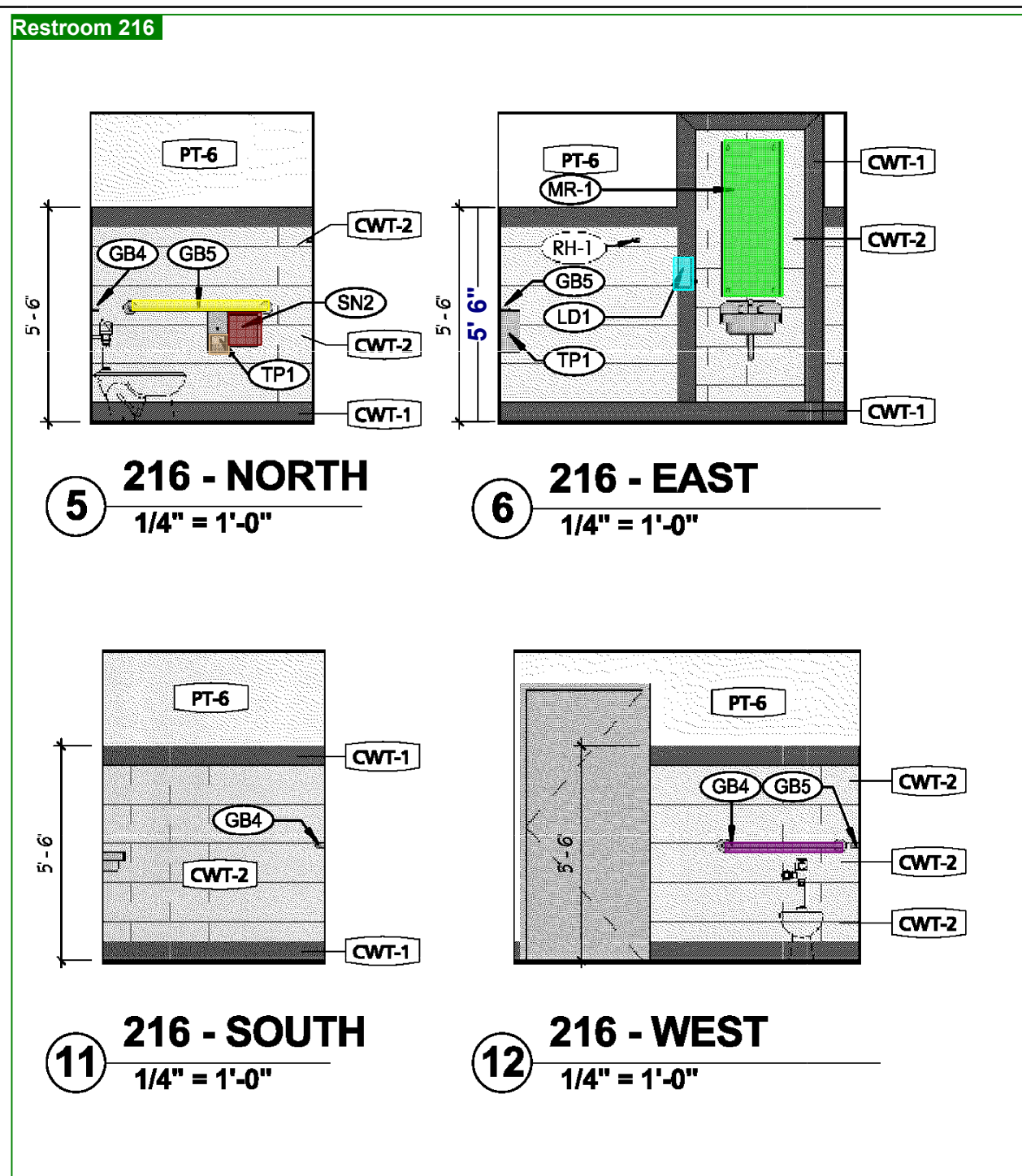
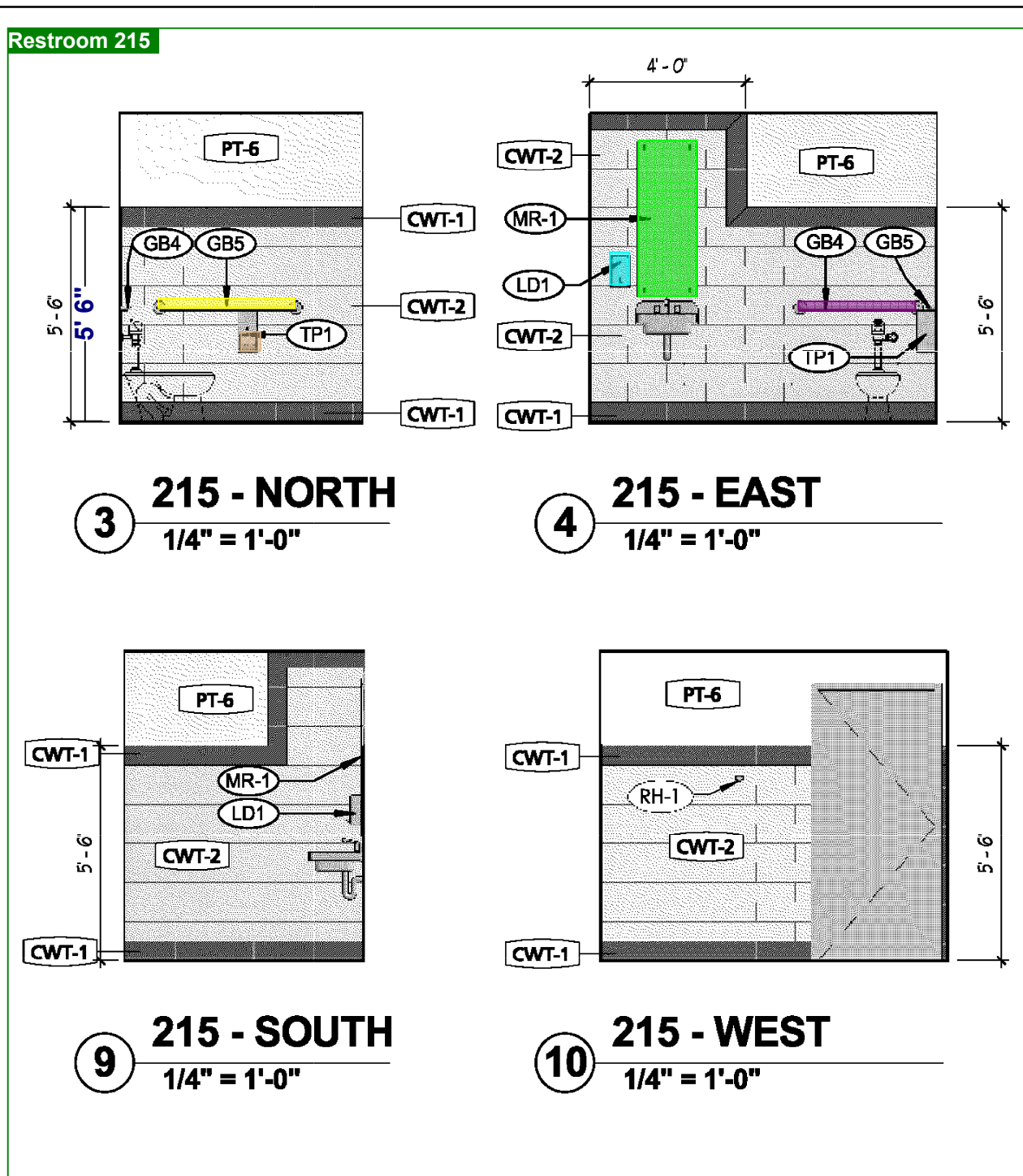
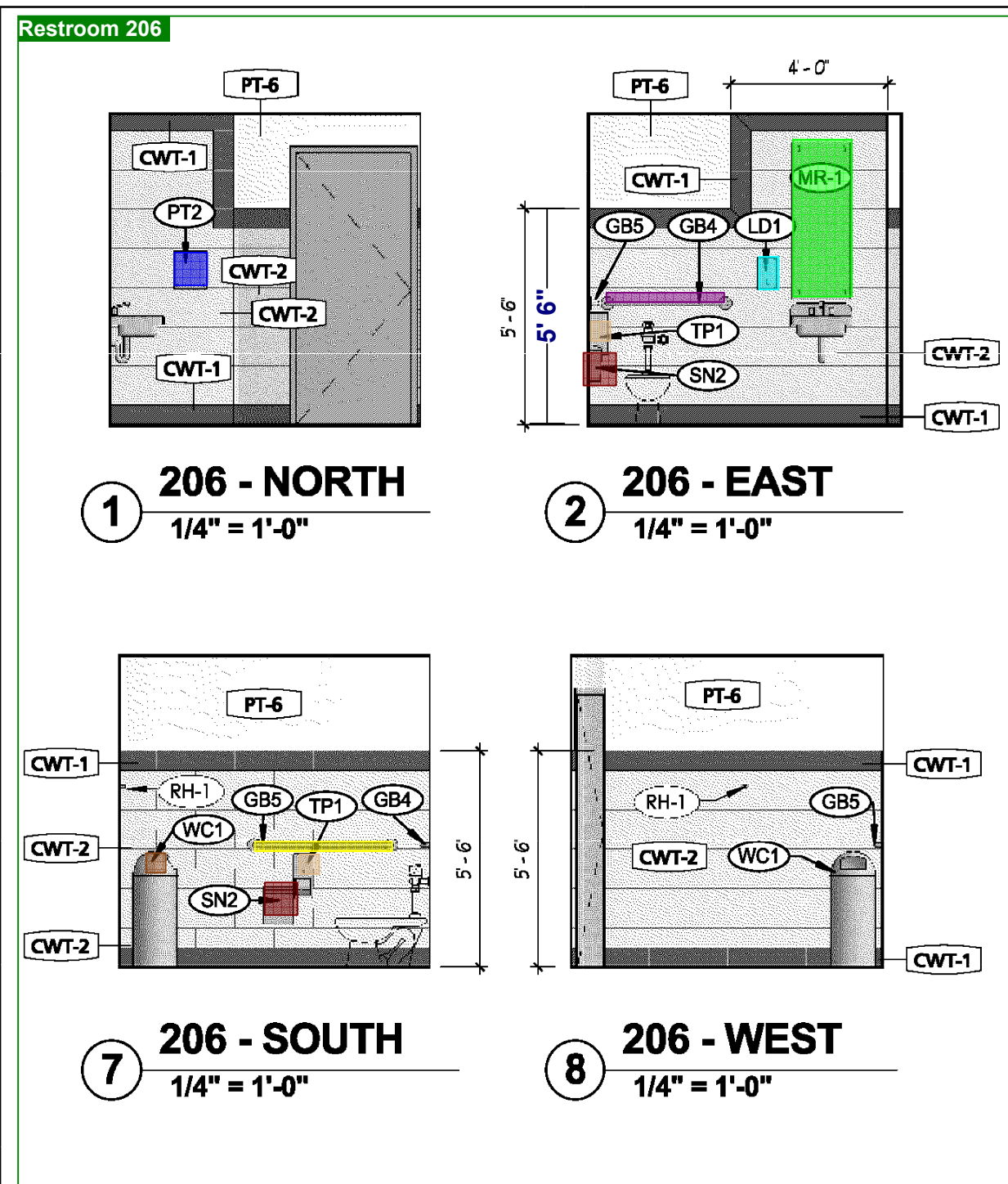
MANNS WOODWARD STUDIOS
ARCHITECTURE | INTERIORS | MASTER PLANNING

10839-D PHILADELPHIA RD
WHITE MARSH, MD 21162

WWW.MWSARCH.COM
(P) 410-344-1460
(F) 443-403-2460

ENLARGED PLANS & INT. ELEV.
HARFORD COUNTY PUBLIC LIBRARY
HAVRE DE GRACE LIBRARY
120 NORTH UNION AVENUE HAVRE DE GRACE, MD 21078

[illegible]

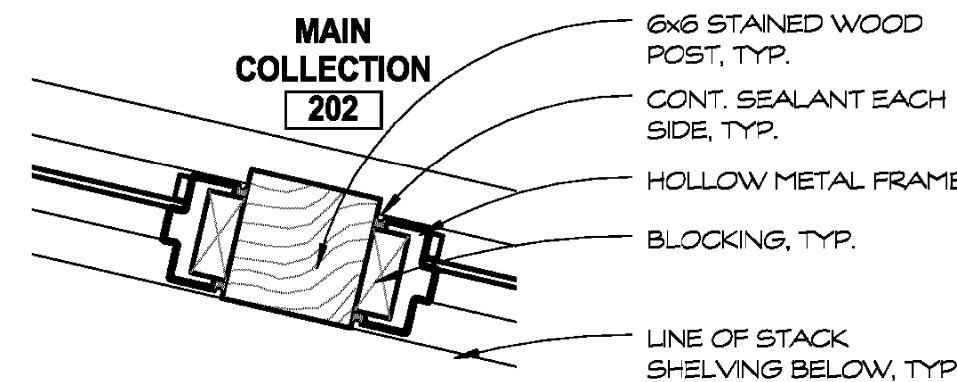


TAG	FIXTURE / ACCESSORY	NOTES
PT1	PAPER TOWEL DISPENSER/DISPOSAL	-
PT2	PAPER TOWEL DISPENSER	-
LD1	LIQUID SOAP DISPENSER	-
WC1	WASTE CONTAINER	-
MR1	WALL MOUNTED MIRROR 18" X 48"	CTR ON LAV
TP1	TOILET PAPER DISPENSER - OVER UNDER	-
TP2	TOILET PAPER DISPENSER - SIDE BY SIDE	-
SN1	SANITARY NAPKIN DISPOSAL - SURFACE MTD.	-
SN2	SANITARY NAPKIN DISPOSAL - TWO SIDED	-
GB1	GRAB BAR - 18"	-
GB2	GRAB BAR - 24"	-
GB3	GRAB BAR - 30"	-
GB4	GRAB BAR - 36"	-
GB5	GRAB BAR - 42"	-
GB6	GRAB BAR - 48"	-
SP1	SEAT COVER DISPENSER	-
SS1	FOLDING SHOWER SEAT	-
HD1	HAND DRYER	-
SC1	SHOWER CURTAIN	-
US1	MOP HOLDER/ SHELF	-
DC1	WALL MOUNTED DIAPER CHANGING STATION	-
DC2	RECESSED DIAPER CHANGING STATION	-
SP1	SOAP DISH	-

NOTE: MOUNT ALL FIXTURES IN ACCORDANCE WITH ADA REQUIREMENTS.

TOILET ROOM EQUIPMENT (TYPICAL)

1:1



- 66 - TP-1 Toilet Paper Dispenser - Over Under - 4 EA
- 68 - PT-2 Paper Towel Dispenser - 1 EA
- 69 - LD-1 Liquid Soap Dispenser - 3 EA
- 70 - MR-1 Wall Mounted Mirror 18" X 48" - 3 EA
- 73 - GB-4 Grab Bar - 36" - 3 EA
- 74 - GB-5 Grab Bar - 42" - 3 EA
- 76 - WC-1 Waste Container - 1 EA
- 77 - SN-2 Sanitary Napkin Disposal - Two Sided - 3 EA

WALLS	PT-1 PAINT - EGGSHELL	
	PT-2 PAINT - SEMI-GLOSS	
	PT-3 PAINT - EGGSHELL	
	PT-3A PAINT - SEMI-GLOSS	
	PT-4 PAINT - EGGSHELL	
	PT-5 PAINT - FLAT	
	PT-5A PAINT - SEMI-GLOSS	
	PT-6 PAINT - EGGSHELL	
	PT-6A PAINT - SEMI-GLOSS	
	PT-7 PAINT - EGGSHELL	
	PT-7A PAINT - SEMI-GLOSS	
	CWT-1 CERAMIC WALL TILE 6X6	
	CWT-2 CERAMIC WALL TILE	
	CWT-3 CERAMIC WALL TILE	
	HPC-1 HIGH PERFORMANCE COATING	
	HPC-2 HIGH PERFORMANCE COATING	
	HPC-3 HIGH PERFORMANCE COATING	
	CR-1 PROFILE VINYL/RUBBER CHAIR RAIL	
	RT-1 RUBBER TRIM	
	FRP-1 FIBERGLASS REINFORCED PLASTIC PANEL	
	SW-1 SPECIALTY WALL PANEL	
CEILING	CL-1 ACOUSTIC CEILING TILE	
	CL-2 ACOUSTIC CEILING TILE	
	CL-3 EXPOSED CEILING	
	CL-4 PAINTED GWS	
	CL-5 STAINED WOOD	
MISC.	SS-1 SOLID SURFACE	
	SS-2 SOLID SURFACE	
	QS-1 QUARTZ SURFACE	
	QS-2 QUARTZ SURFACE	
	PL-1 PLASTIC LAMINATE	
	PL-2 PLASTIC LAMINATE	
	PL-3 PLASTIC LAMINATE	
	PL-4 PLASTIC LAMINATE	
	PL-5 PLASTIC LAMINATE	
	PL-6 PLASTIC LAMINATE	
	SHM-1 SELF-HEALING MAT (LINOLEUM SHEET FLGS.)	
	ST-1 STAIN COLOR	
	TP-1 TOILET PARTITION COLOR	
	MSH-1 METAL MESH PANEL	
	TF-1 LOOSELY TENSIONED FABRIC	
	ROP-1 2" BRAIDED MANILA ROPE	
	TK-1 TACKBOARD	
	3F-1 RESIN PANEL	
	3F-2 RESIN PANEL	
	3F-3 RESIN PANEL	
	3F-4 RESIN PANEL	

MANNS WOODWARD STUDIOS
ARCHITECTURE | INTERIORS | MASTER PLANNING
WWW.MWSARCH.COM
10839-D PHILADELPHIA RD
WHITE MARSH, MD 21162
(P) 410-344-1460
(F) 443-403-2460

ENLARGED PLANS & INT. ELEV.
HARFORD COUNTY PUBLIC LIBRARY
HAYRE DE GRACE LIBRARY
120 NORTH UNION AVENUE
HAYRE DE GRACE, MD 21078

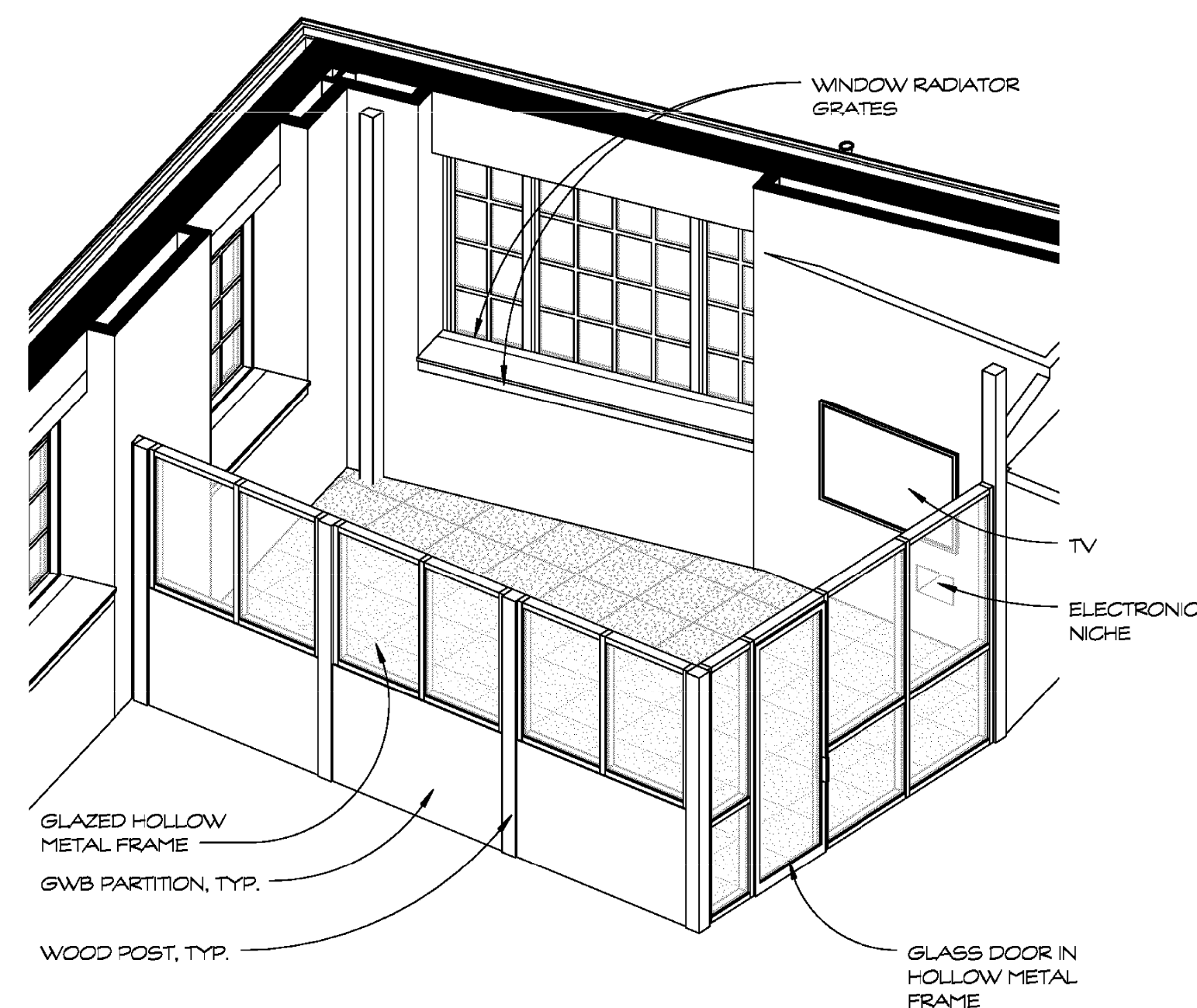
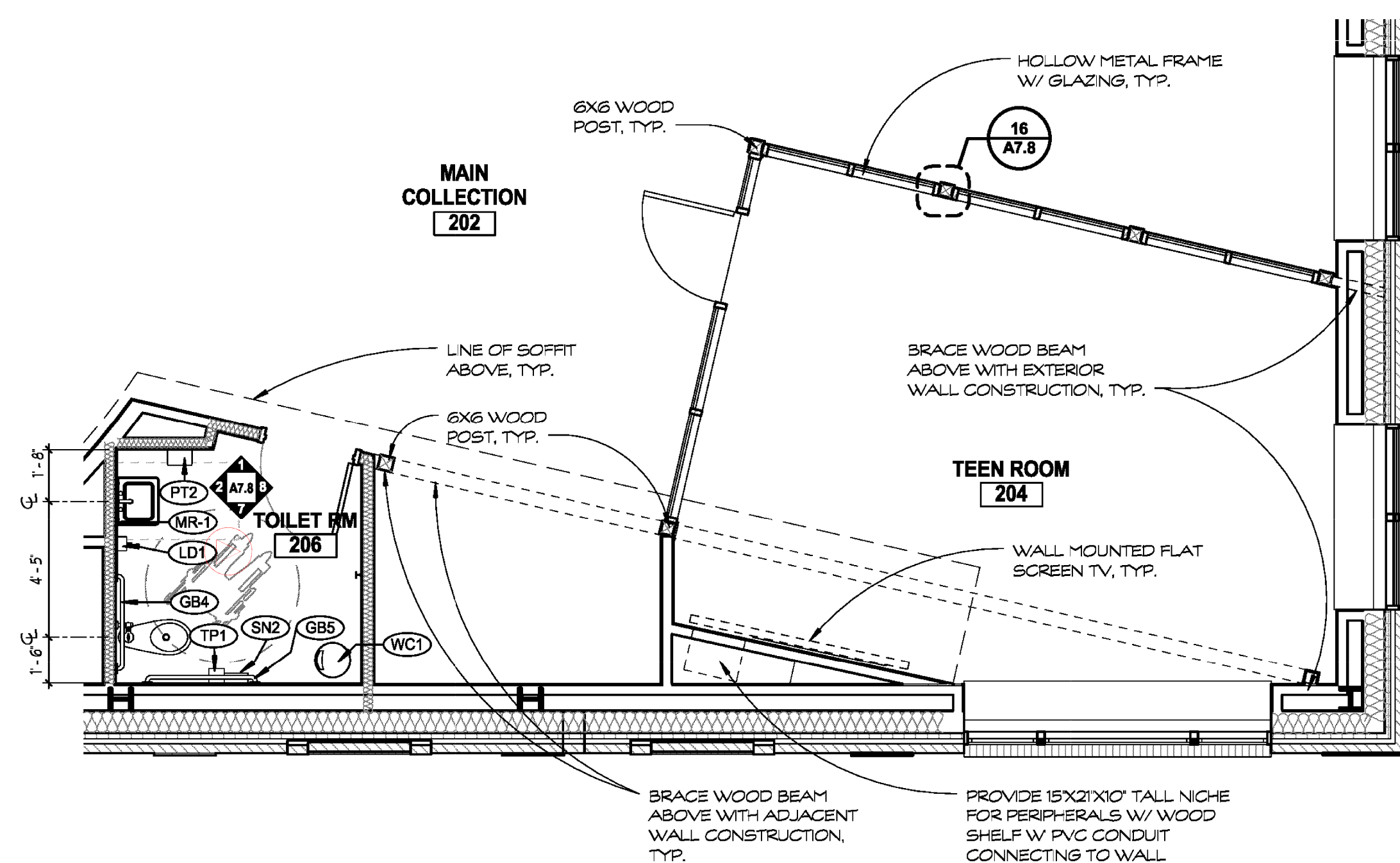
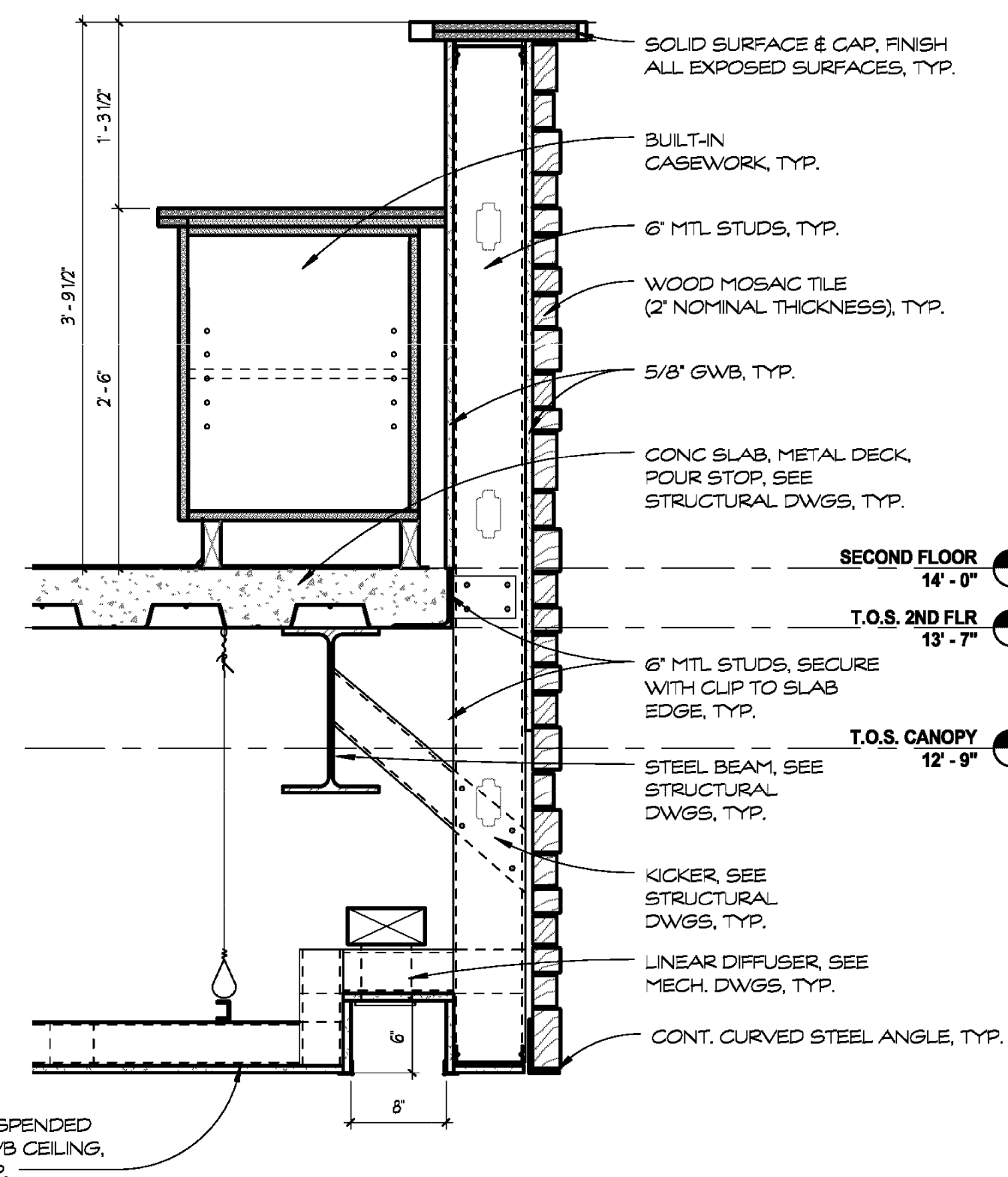
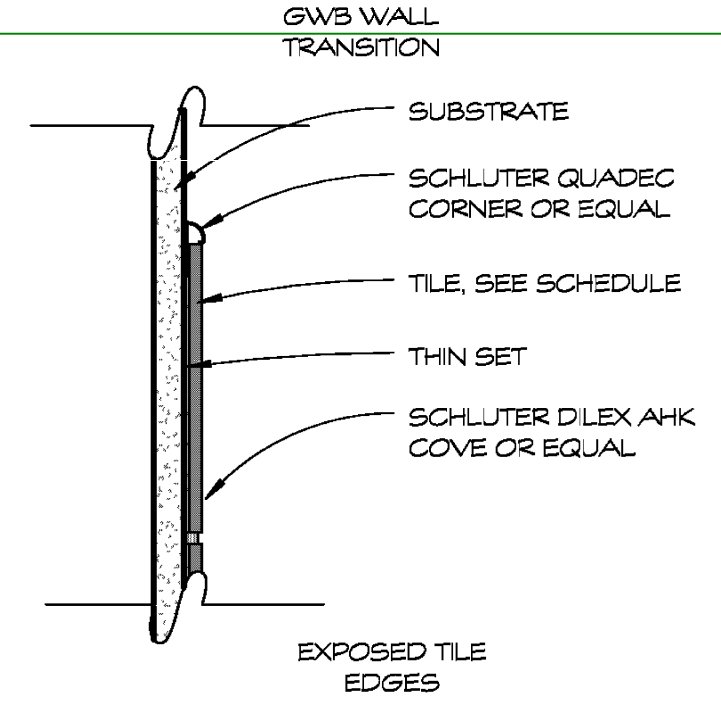
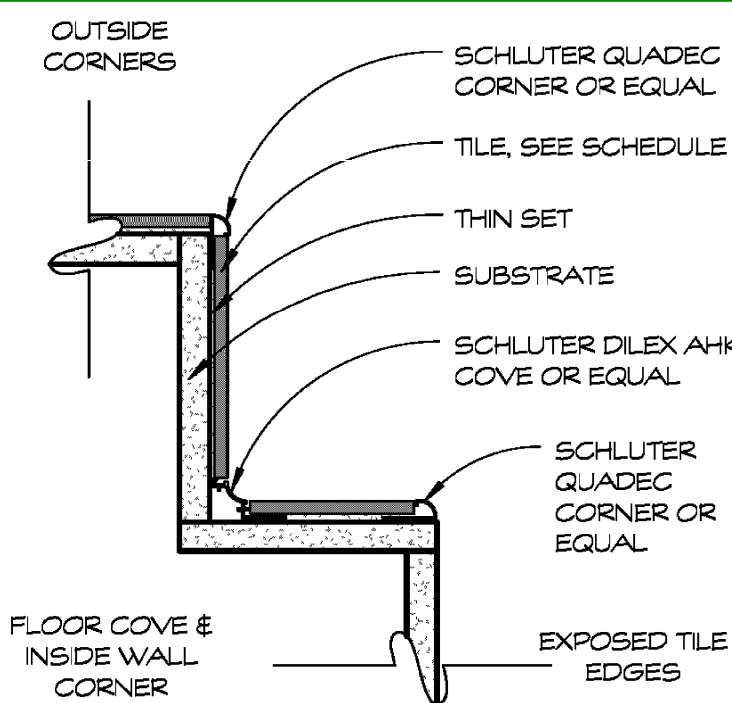
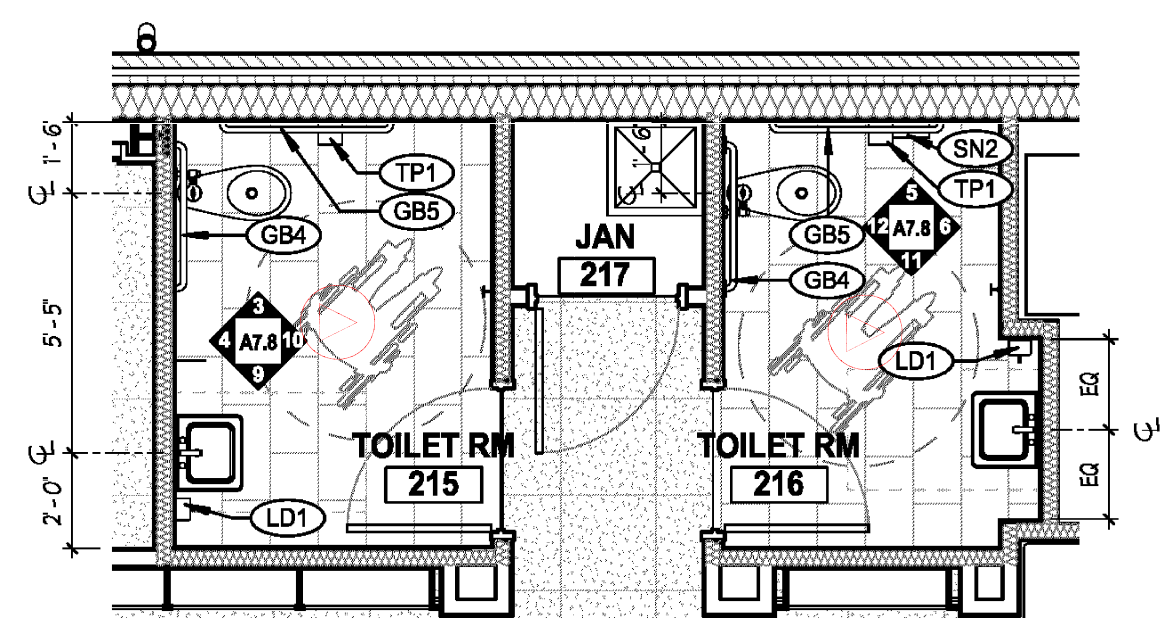
NO.	DESCRIPTION	DATE

PROJECT NUMBER:
13-026
PROJECT SET:
BID DOCUMENTS
DATE ISSUED:
7.23.14

DRAWING TITLE:
ENLARGED PLANS & INT.
ELEV.

SHEET NUMBER:
A7.8

Takeoff By: Anuj
Checked By: Nares
Date: 1st June, 2016



- 1 SPRINKLER LOCATIONS SHOWN ARE DIAGRAMMATIC AND MEANT FOR DESIGN INTENT ONLY. ACTUAL SPRINKLER LAYOUT AND HEAD LOCATION TO BE APPROVED BY ARCHITECT.
- 2 ALL CONDUIT FOR TRUSS-MOUNTED LIGHTING TO BE RUN ON TOP OF AND ALONG THE CENTERLINE OF THE BOTTOM CHORD OF EACH TRUSS.
- 3 ALL EXPOSED SIPs PANELS TO BE CLAD IN 5/8" ACOUSTICALLY ENHANCED DRYWALL.
- 5 ALL WOOD T&G CEILINGS & SOFFITS TO RECEIVE STAIN ST-1.

LEGEND - CEILING LEGEND
NOT TO SCALE

1'-6"

9'-0"

3

SECOND FLOOR

CONC. SLAB, TYP.

HOLD GWB 1/2" FROM UNDERSIDE OF DECK, FILL GAP W/ ACOUSTIC SEALANT, TYP.

DEFLECTION TRACK, TYP.

STEEL STRUCTURE, TYP.

10.5" 12'-3"

STEEL ANGLE & STRUCTURAL TEE, SEE STRUCTURAL DWGS, TYP.

3 5/8" MT. STUDS W/ (2) LAYERS OF 5/8" GWB, TYP.

8.0.5" 10'-6"

2X2 CLIP ANGLE, TYP.

ACT CLG PER RCP, TYP.

LAP BATTS OVER GAP @ DOOR, TYP.

GWB BULKHEAD TERMINATE GWB W. DRYWALL STOP, TYP.

O.P.P. TRACK ASSEMBLY, INSTALL PER MANUF. RECOMMENDATIONS, TYP.

OPERABLE PANEL PARTITION (O.P.P.), TYP.

FLOATING SEAL @ FLOOR, TYP.

LINE OF FINISH FLOOR, TYP.

②

1" = 1'-0"

①

$$\frac{1}{8}'' = 1'-0''$$

Date: 1st June, 2016

SEAL:

I HEREBY CERTIFY THAT THESE DOCUMENTS
 WERE PREPARED OR APPROVED BY ME,
 AND THAT I AM A DULY LICENSED
 PROFESSIONAL ARCHITECT UNDER THE
 LAWS OF THE STATE OF MARYLAND.
 LICENSE NUMBER: #15505
 EXPIRATION DATE: 8-18-2014

110839-D PHILADELPHIA RD
WHITE MARSH, MD 21162
WWW.MWSARCH.COM
(P) 410-344-1460
(F) 443-403-2460

**120 NORTH UNION AVENUE
HAVRE DE GRACE, MD 21078**

[illegible]

PROJECT NUMBER: 13-026
PROJECT SET: BID DOCUMENTS
DATE ISSUED: 7.23.14

DRAWING TITLE:
REFLECTED CEILING
PLAN

SHEET NUMBER: 15

A8.1

ALL DRAWINGS ARE PROTECTED BY FEDERAL COPYRIGHT BY MANNS WOODWARD STUDIOS, INC. AND CAN NOT BE REPRODUCED OR MODIFIED IN ANY MANNER WITHOUT WRITTEN PERMISSION. DOCUMENTS MAY NOT BE USED IN PART OR WHOLE TO DEVELOP THE DESIGN OF ANOTHER BUILDING WITHOUT EXPRESS WRITTEN PERMISSION BY MANNS WOODWARD STUDIOS.

BID DOCUMENTS

.....

