

D.F.P.
PLANNING & DESIGN
9000 BALTIMORE ST. N. SUITE 100 BLAINE, MN 55449
WEB: WWW.DFPDESIGN.COM E-MAIL: INFO@DFPDESIGN.COM
Phone: 763-780-9004 Fax: 763-780-8005

ELIASSEN RESIDENCE
7420 CHANHASSEN ROAD
CHANHASSEN, MINNESOTA

DATE:
12-2-14
REVISIONS:
2-2-15 LB

DRAWN BY:
CD

COMM. NO.
214416

SHEET NO.

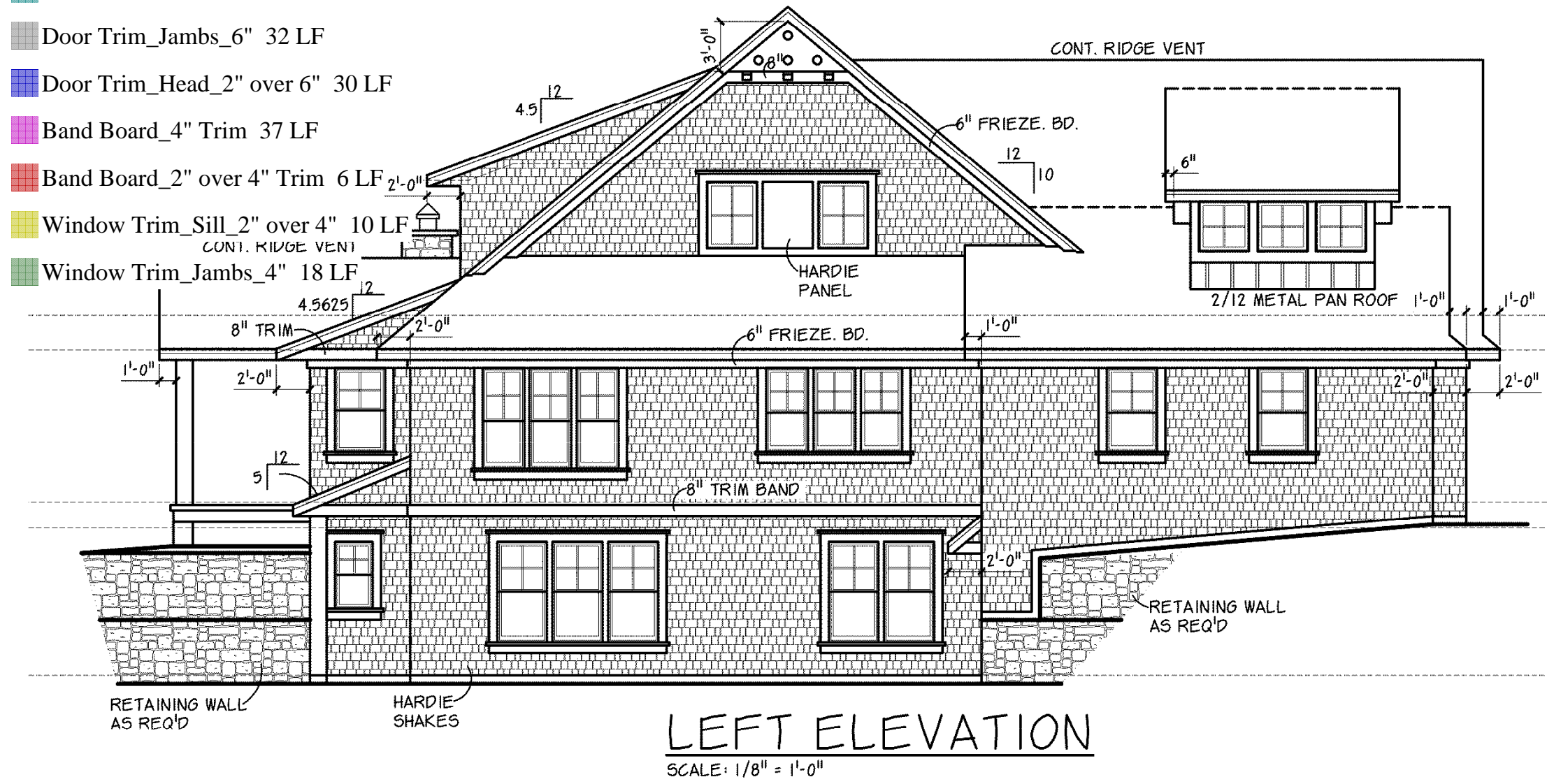


- | | | |
|-------------------------------------------------------------------------------------|------------------------------|----------|
|  | Hardie Shakes | 3,640 SF |
|  | Freize at Gable 6" | 109 LF |
|  | Freize at Eaves 6" | 176 LF |
|  | 8" Trim Band | 117 LF |
|  | Fascia at Eaves 3" Over 8" | 297 LF |
|  | Fascia at Gables 3" over 5" | 312 LF |
|  | Soffit at Gables 1' | 250 LF |
|  | Soffit at Eaves 2' | 49 LF |
|  | Soffit at Eaves 1'6" | 23 LF |
|  | Soffit at Gables 8" | 33 LF |
|  | Corbels/ Brackets | 6 EA |
|  | 6" & 2" Trim | 14 LF |
|  | 10" & 4" Trim | 52 LF |
|  | Hardie Panels | 49 SF |
|  | Window Trim_Sill_6" | 56 LF |
|  | Window Trim_Jamb_6" | 379 LF |
|  | Window Trim_Head_6" | 46 LF |
|  | Window Trim_Sill_2" over 6" | 126 LF |
|  | Window Trim_Head_2" over 6" | 61 LF |
|  | Window Trim_Sill_8" | 22 LF |
| | Window Trim_Sill_8" over 12" | 8 LF |
| | Door Trim_Jamb_6" | 47 LF |
| | Door Trim_Head_2" over 6" | 28 LF |
| | Band Board_6" Trim | 123 LF |

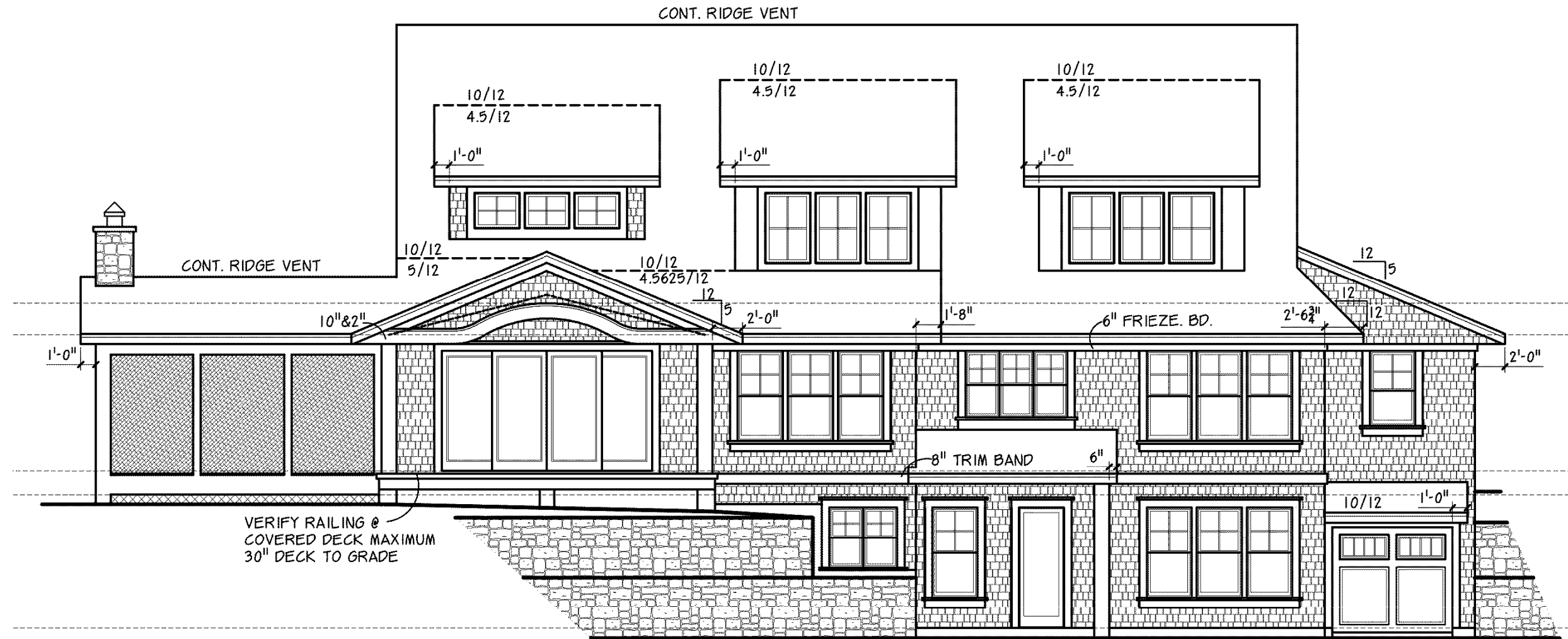
2,668 SQ. FT. F.F.
1,444 SQ. FT. S.F.
 4,112 SQ. FT. TOTAL
2,169 SQ. FT. L.L. FIN.
 6,281 SQ. FT. TOTAL
 434 SQ. FT. FUT. FIN. BONUS
 269 SQ. FT. SCREEN PORCH
 302 SQ. FT. COVERED DECK
 922 SQ. FT. LOWER GARAGE

- * KICKOUT FLASHING TO BE INSTALLED AS NEEDED
- * EXTERIOR WALL FINISHER TO VERIFY KICKOUT FLASHING IS INSTALLED PRIOR TO FINISHING
- * CARPENTER TO FLASH ALL EXTERIOR WINDOWS AND DOORS PER MN. & IRC CODE REQUIREMENTS

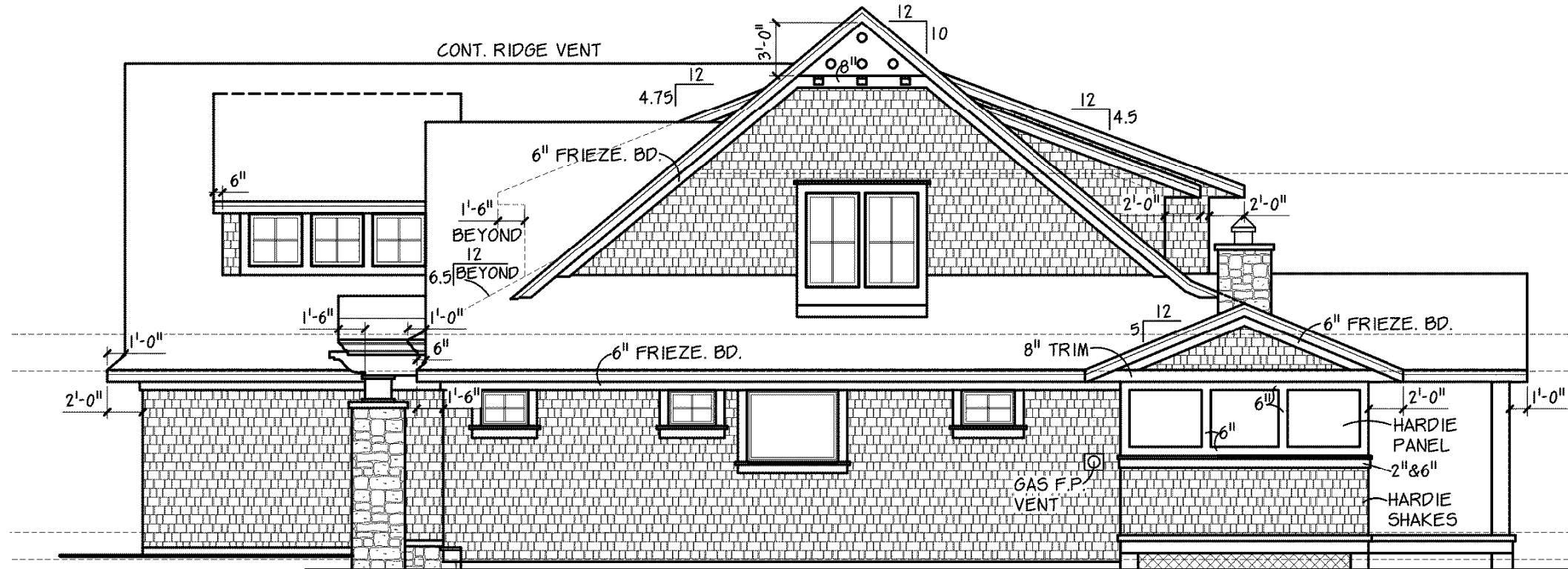
- Hardie Shakes 659 SF
- Crown Fascia at Porch 17 LF
- Freize at Gable 8" 50 LF
- Freize at Eaves 6" 37 LF
- 8" Trim Band 5 LF
- Fascia at Eaves 3" Over 8" 86 LF
- Fascia at Gables 3" Over 7" 69 LF
- Fascia at Gables 3" over 5" 59 LF
- Soffit at Gables 1' 73 LF
- Soffit at Eaves 1'6" 15 LF
- Soffit at Gables 6" 21 LF
- Soffit at Gables 1'6" 21 LF
- Corbels/ Brackets 7 EA
- 6" & 2" Trim 19 LF
- 10" & 4" Trim 35 LF
- Window Trim_Jambs_6" 58 LF
- Window Trim_Sill_2" over 6" 22 LF
- Window Trim_Head_2" over 6" 22 LF
- Door Trim_Jambs_6" 32 LF
- Door Trim_Head_2" over 6" 30 LF
- Band Board_4" Trim 37 LF
- Band Board_2" over 4" Trim 6 LF
- Window Trim_Sill_2" over 4" 10 LF
- Window Trim_Jambs_4" 18 LF



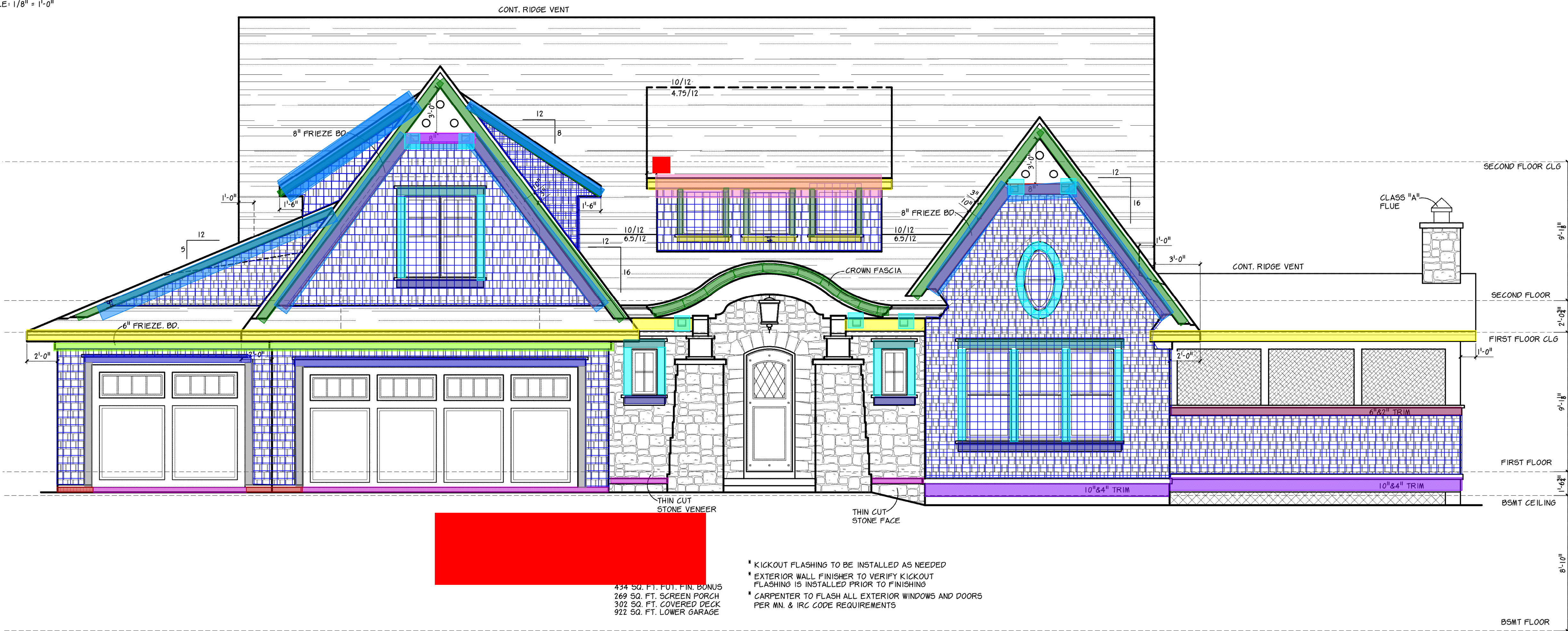
LEFT ELEVATION



REAR ELEVATION



RIGHT ELEVATION



- KICKOUT FLASHING TO BE INSTALLED AS NEEDED
- EXTERIOR WALL FINISHER TO VERIFY KICKOUT FLASHING IS INSTALLED PRIOR TO FINISHING
- CARPENTER TO FLASH ALL EXTERIOR WINDOWS AND DOORS PER MN. & IRC CODE REQUIREMENTS

434 SQ. FT. FOT. FIN. BONUS
269 SQ. FT. SCREEN PORCH
302 SQ. FT. COVERED DECK
922 SQ. FT. LOWER GARAGE

REVIEW PLAN
NOT FOR BUILDING PURPOSES

D.F.P. PLANNING & DESIGN
9800 BALTIMORE ST. NE, SUITE 206, BLAINE, MN 55449
WEB: WWW.DFPDESIGN.COM E-MAIL: INFO@DFPD.COM
Phone: 763.780.8004 Fax: 763.780.8005

© 2014 DFP PLANNING & DESIGN
UNAUTHORIZED USE OF THE PLAN
IS A VIOLATION OF THE U.S.
COPYRIGHT ACT

ELIASSEN RESIDENCE
7420 CHANHASSEN ROAD
CHANHASSEN, MINNESOTA

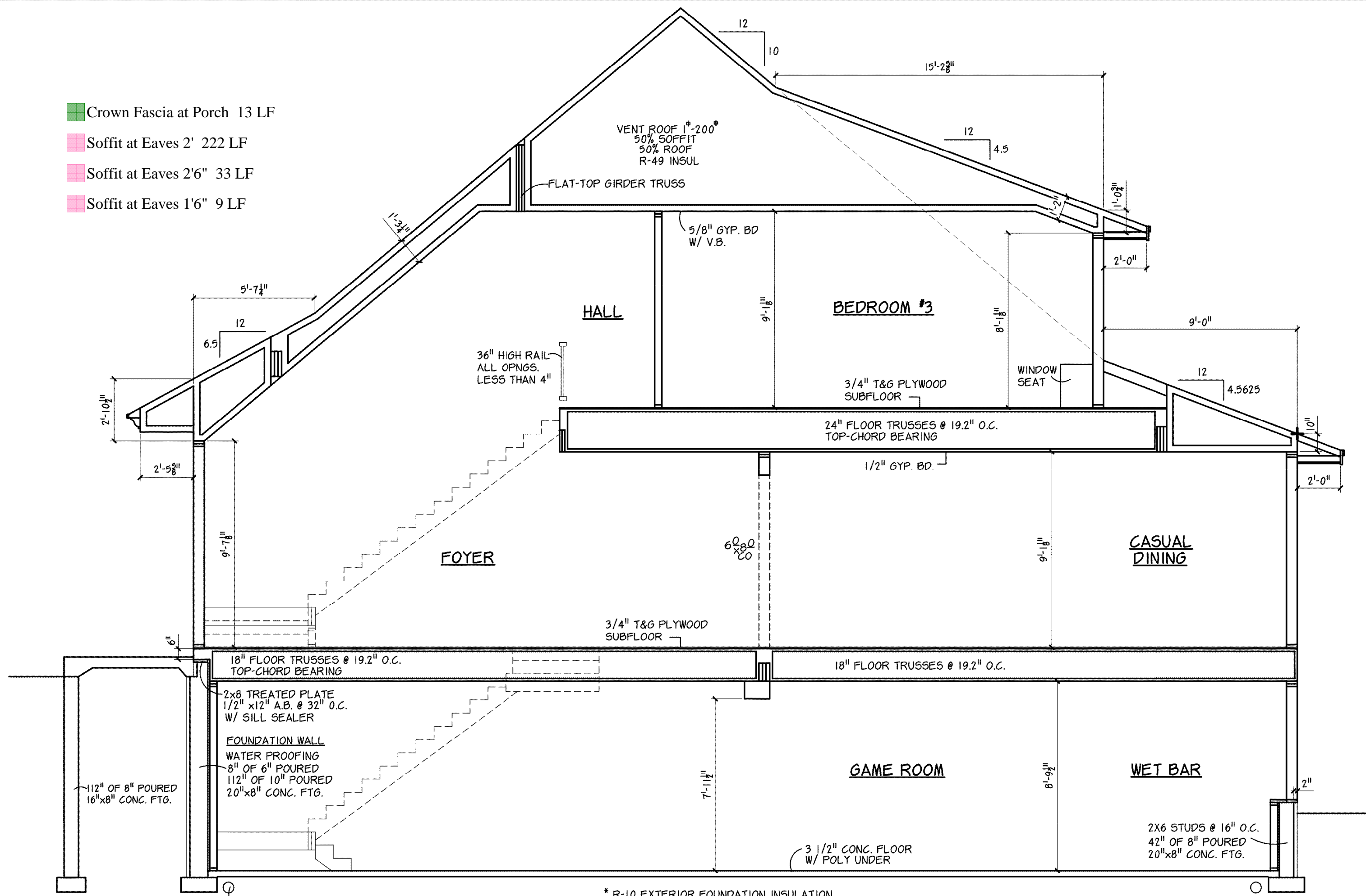
DATE:
12-2-14
REVISIONS:
2-2-19 LB

DRAWN BY:
CD

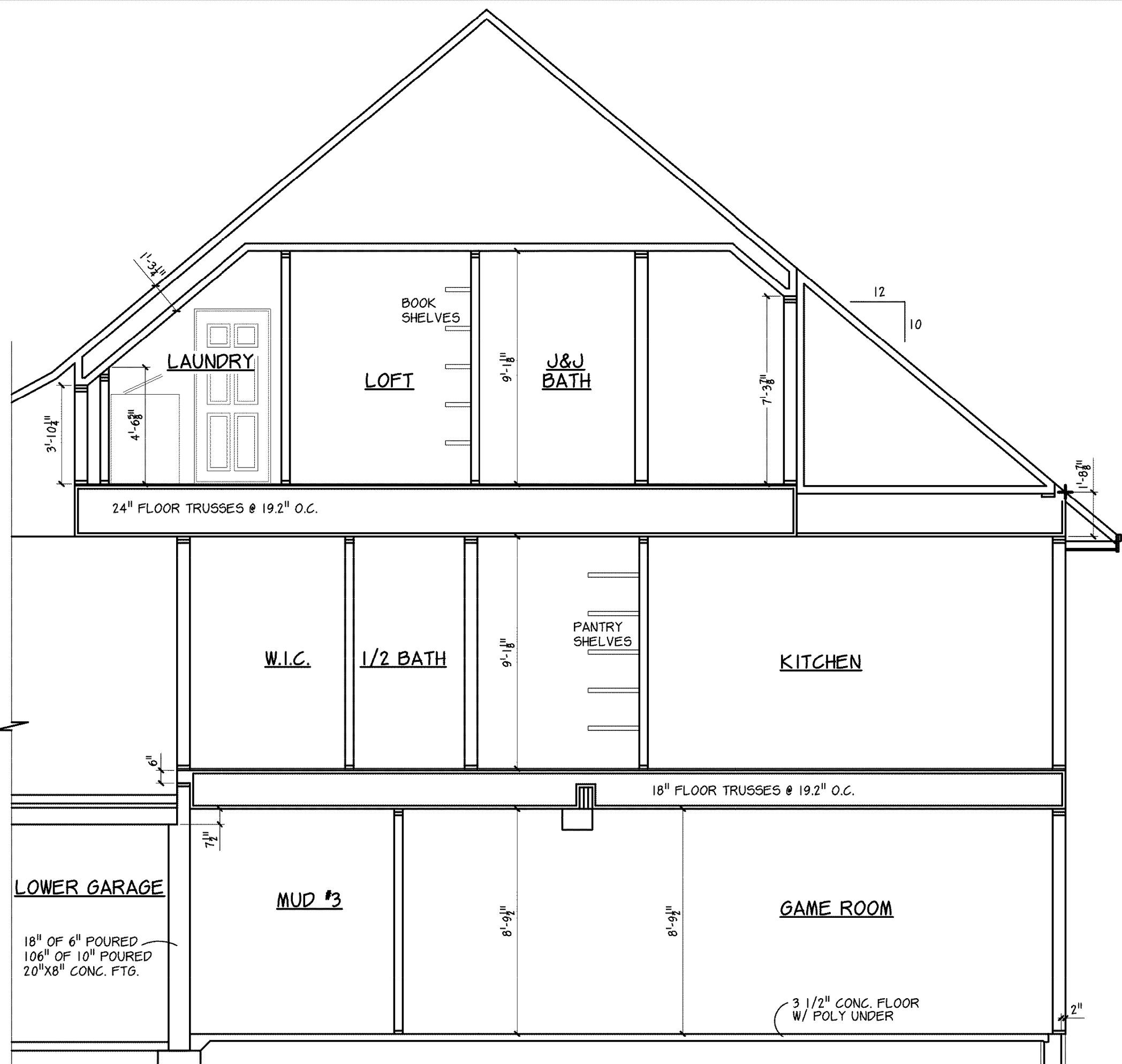
COMM. NO.
214416
SHEET NO.
1

REVIEW PLAN
NOT FOR BUILDING PURPOSES

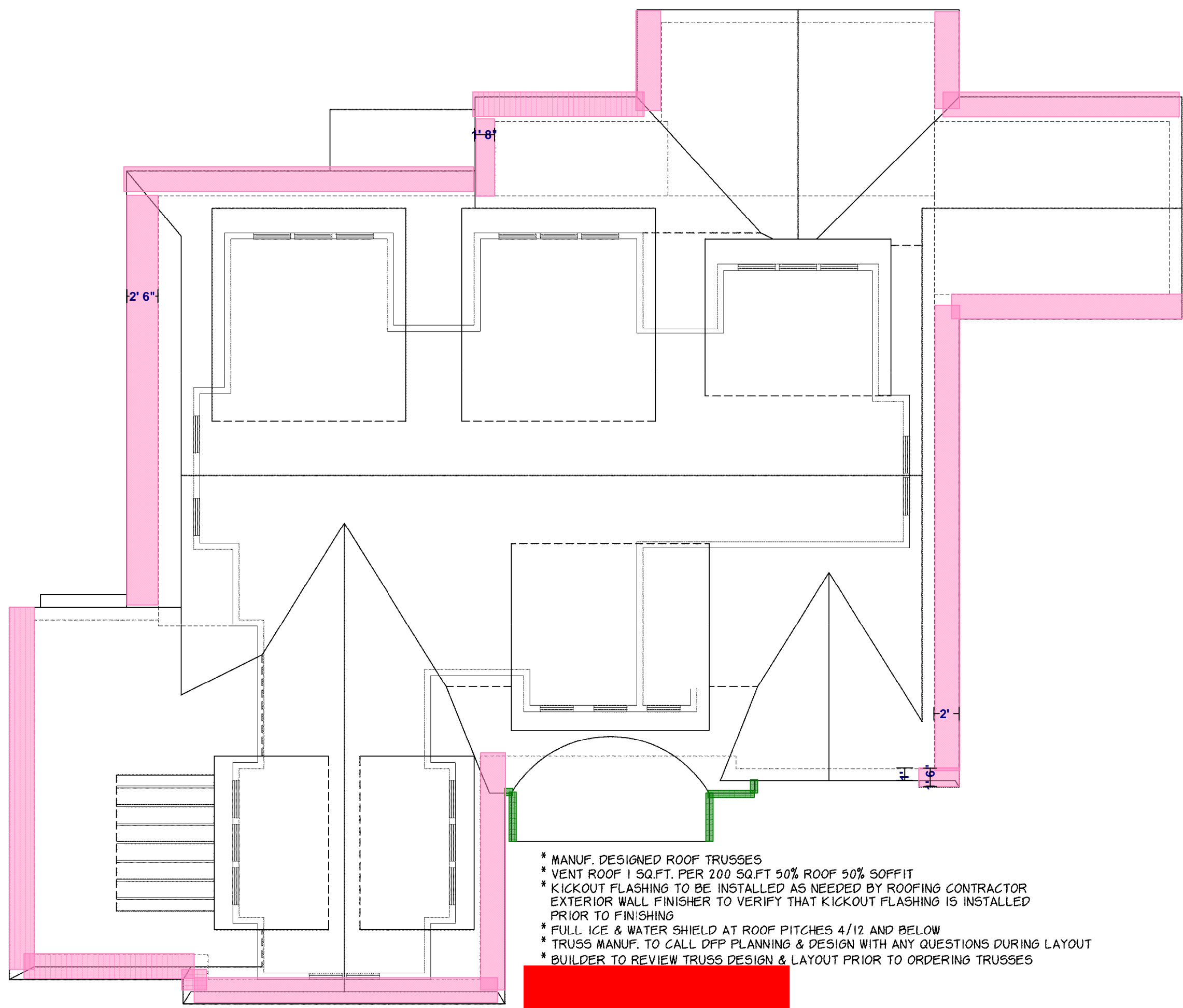
- Crown Fascia at Porch 13 LF
- Soffit at Eaves 2' 222 LF
- Soffit at Eaves 2'6" 33 LF
- Soffit at Eaves 1'6" 9 LF



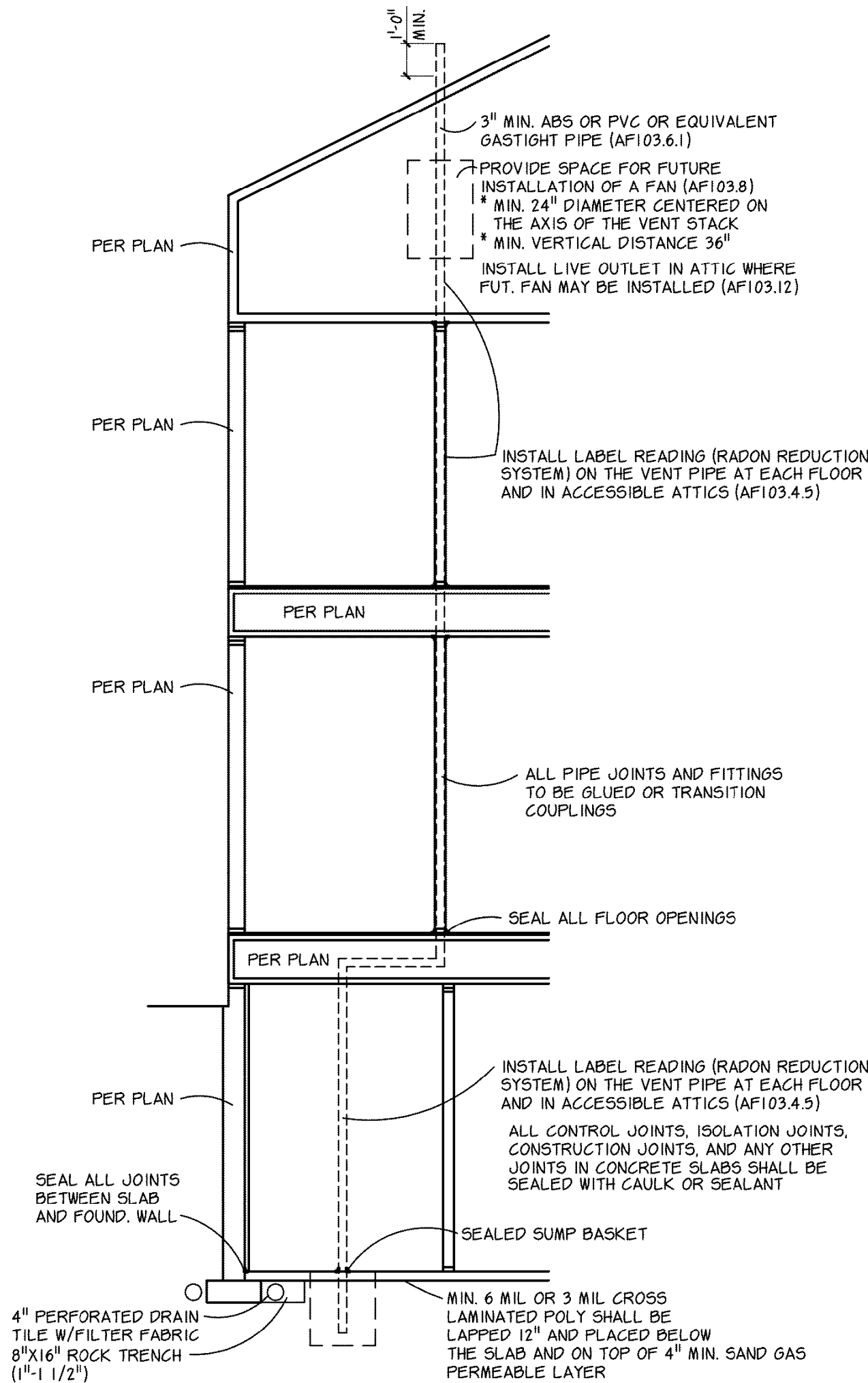
CROSS SECTION "D"
SCALE: 1/4" = 1'-0"



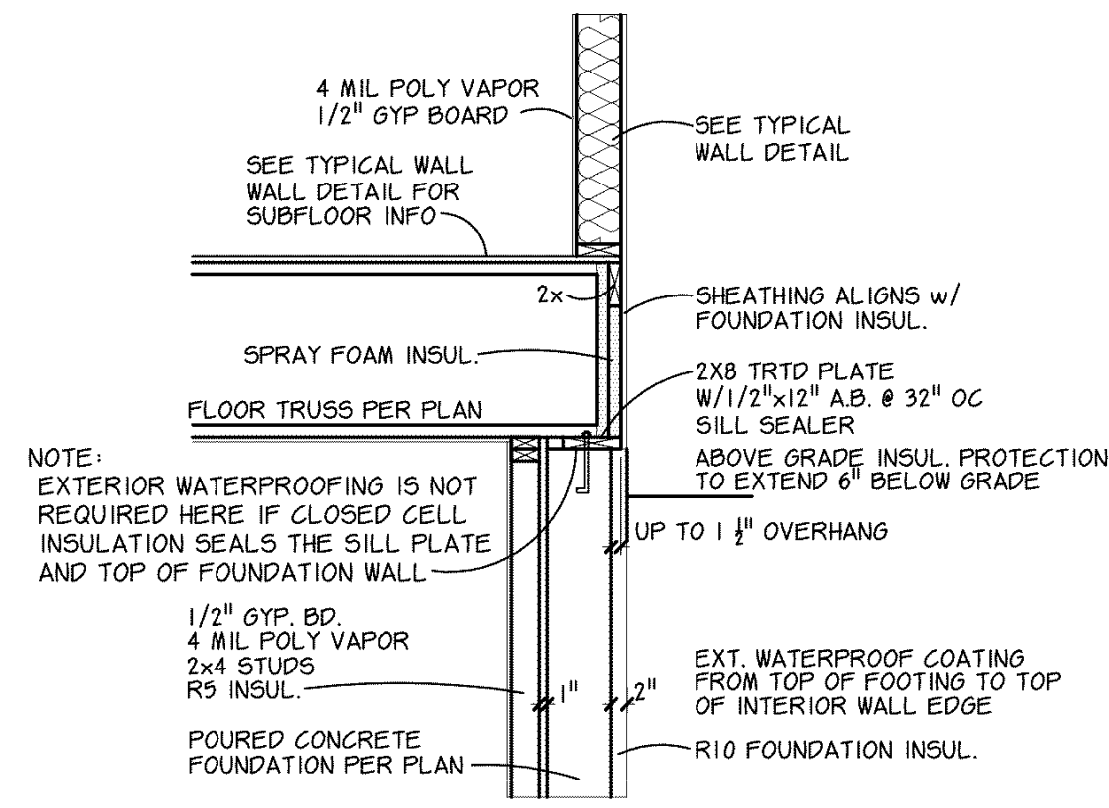
CROSS SECTION "E"
SCALE: 1/4" = 1'-0"



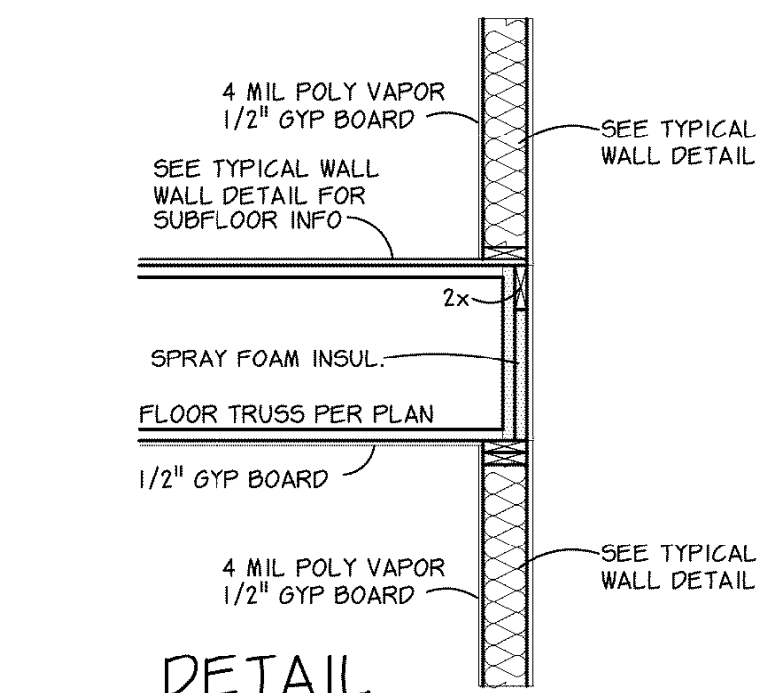
- * MANUF. DESIGNED ROOF TRUSSES
- * VENT ROOF 1 SQ.FT. PER 200 SQ.FT 50% ROOF 50% SOFFIT
- * KICKOUT FLASHING TO BE INSTALLED AS NEEDED BY ROOFING CONTRACTOR
- * EXTERIOR WALL FINISHER TO VERIFY THAT KICKOUT FLASHING IS INSTALLED
- * PRIOR TO FINISHING
- * FULL ICE & WATER SHIELD AT ROOF PITCHES 4/12 AND BELOW
- * TRUSS MANUF. TO CALL DFP PLANNING & DESIGN WITH ANY QUESTIONS DURING LAYOUT
- * BUILDER TO REVIEW TRUSS DESIGN & LAYOUT PRIOR TO ORDERING TRUSSES



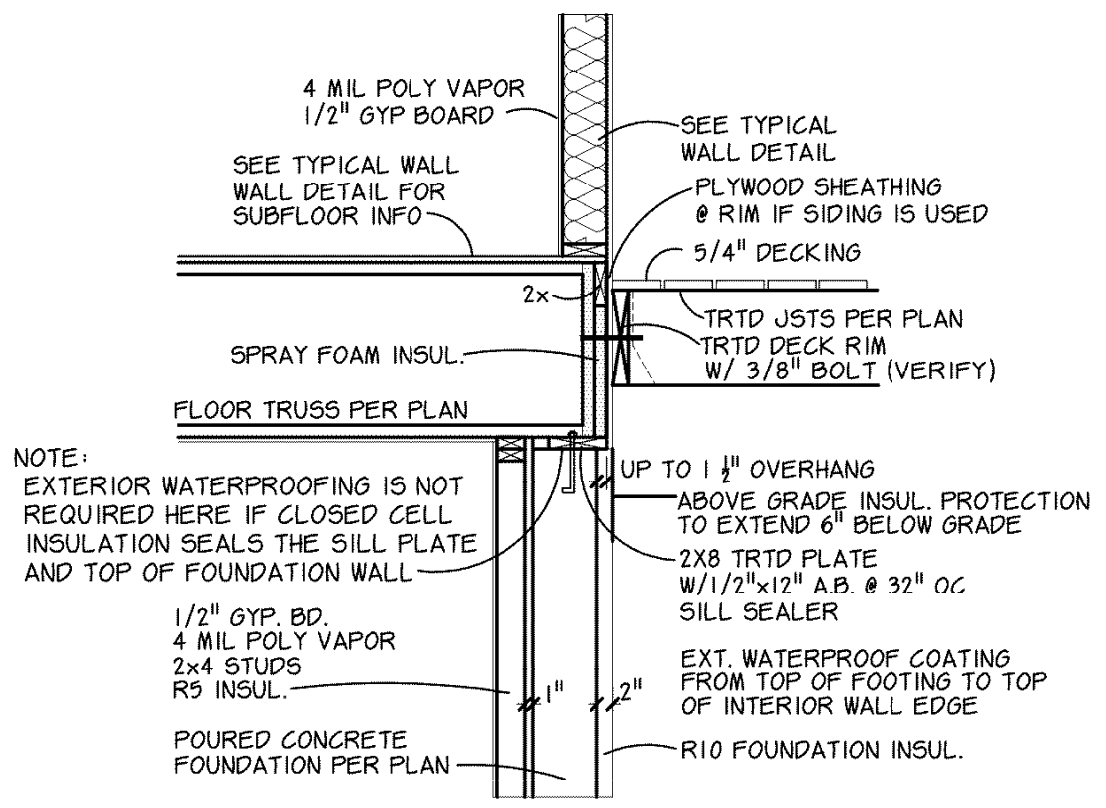
PASSIVE RADON DETAIL
SCALE: 1/4" = 1'-0"



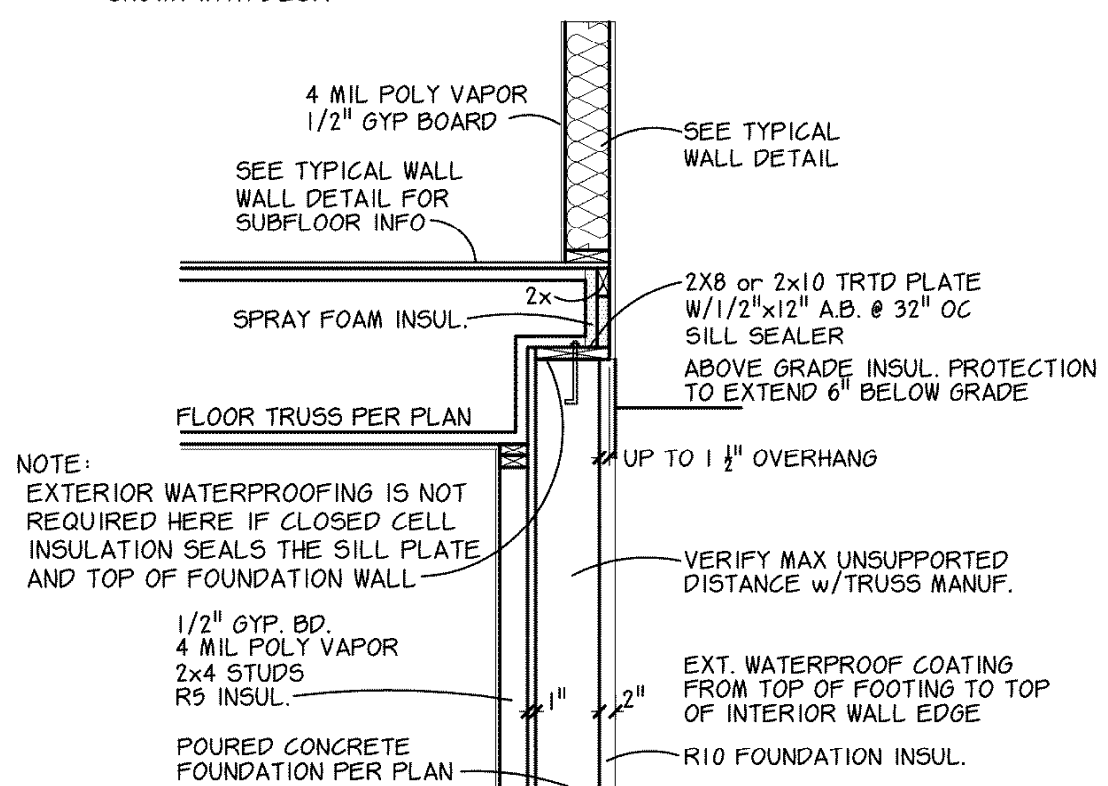
DETAIL
* FLOOR SYSTEM PERPENDICULAR TO FOUNDATION WALL
* FOUNDATION WALL HELD IN 2" FROM SHEATHING ABOVE



DETAIL
* FLOOR SYSTEM PERPENDICULAR TO FRAMED WALL



DETAIL
* BOTTOM CHORD BEARING FLOOR TRUSSES PERPENDICULAR TO FOUNDATION WALL
* FOUNDATION WALL HELD IN 2" FROM SHEATHING ABOVE
* SHOWN WITH DECK



DETAIL
* TOP CHORD BEARING FLOOR TRUSSES PERPENDICULAR TO FOUNDATION WALL
* FOUNDATION WALL HELD IN 2" FROM SHEATHING ABOVE